

Datasheet for ABIN1098754

**BUB3 Protein (His tag)**[Go to Product page](#)**1** Image

## Overview

Quantity:	100 µg
Target:	BUB3
Origin:	Human
Source:	Escherichia coli (E. coli)
Protein Type:	Recombinant
Purification tag / Conjugate:	This BUB3 protein is labelled with His tag.
Application:	SDS-PAGE (SDS)

## Product Details

Purity:	> 85 % by SDS - PAGE
---------	----------------------

## Target Details

Target:	BUB3
Alternative Name:	BUB3 ( <a href="#">BUB3 Products</a> )
Background:	Mitotic checkpoint protein BUB3, also known as BUB3, is a conserved component of the mitotic spindle assembly complex (MCC). The encoded protein contains four WD repeat domains and has sequence similarity with the yeast BUB3 protein. BUB3 is essential for the kinetochore localization of BUB1 and BUBR1. BUB3 is involved in the essential spindle checkpoint pathway that operates during early embryogenesis. In addition, BUB3 plays a role in regulating the establishment of correct kinetochore-microtubule attachments. Recombinant human BUB3 protein, fused to His-tag at N-terminus, was expressed in E.coli.

Target Details

Molecular Weight:	39.5 kDa (351aa)
NCBI Accession:	<a href="#">NP_004716</a>
Pathways:	<a href="#">Maintenance of Protein Location</a>

Application Details

Comment:	Synonyms: Mitotic checkpoint protein BUB3, BUB3L, hBUB3
Restrictions:	For Research Use only

Handling

Format:	Liquid
Concentration:	1 mg/ml (determined by Bradford assay)
Buffer:	20 mM Tris-HCl buffer (pH 8.0) containing 0.4 M Urea, 10% glycerol
Storage:	4 °C
Storage Comment:	Avoid repeated freezing and thawing cycles.

Images

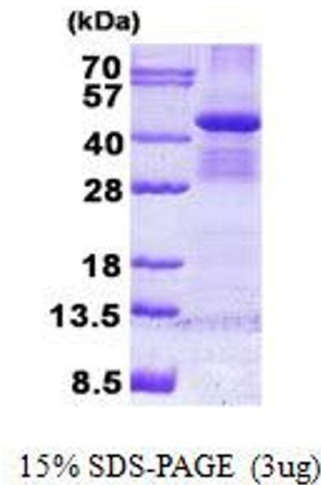


Image 1.