

Datasheet for ABIN1098758
CLEC2D Protein (His tag)[Go to Product page](#)

1 Image

Overview

Quantity:	100 µg
Target:	CLEC2D
Origin:	Human
Source:	Escherichia coli (E. coli)
Protein Type:	Recombinant
Purification tag / Conjugate:	This CLEC2D protein is labelled with His tag.
Application:	SDS-PAGE (SDS)

Product Details

Purity:	> 85 % by SDS - PAGE
---------	----------------------

Target Details

Target:	CLEC2D
Alternative Name:	CLEC2D (CLEC2D Products)
Background:	C-type lectin domain family 2, also known as CLEC2D, is a receptor for KLRB1 that protects target cells against natural killer cell-mediated lysis. It inhibits osteoclast formation and contains a transmembrane domain near the N-terminus as well as the C-type lectin-like extracellular domain. Recombinant human CLEC2D protein, fused to His-tag at N-terminus, was expressed in E.coli.
Molecular Weight:	17.7 kDa (155aa)
NCBI Accession:	NP_037401

Target Details

Pathways: [Regulation of Leukocyte Mediated Immunity](#)

Application Details

Comment:	Synonyms: C-type lectin domain family 2 member D, CLAX1, LLT11, OCIL
Restrictions:	For Research Use only

Handling

Format:	Liquid
Concentration:	1 mg/ml (determined by Bradford assay)
Buffer:	20 mM Tris-HCl buffer (pH 8.0) containing 0.4 M urea, 10% glycerol
Storage:	4 °C
Storage Comment:	Avoid repeated freezing and thawing cycles.

Images

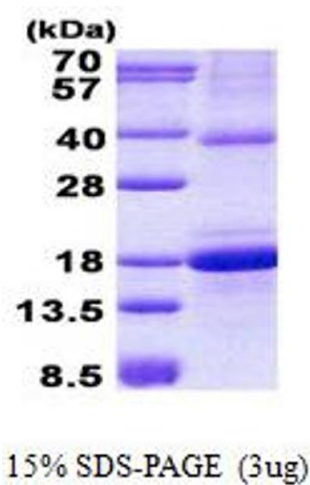


Image 1.