

Datasheet for ABIN1098763

LITAF Protein (His tag)**1** Image[Go to Product page](#)

Overview

Quantity:	100 µg
Target:	LITAF
Origin:	Human
Source:	Escherichia coli (E. coli)
Protein Type:	Recombinant
Purification tag / Conjugate:	This LITAF protein is labelled with His tag.
Application:	SDS-PAGE (SDS)

Product Details

Purity:	> 85 % by SDS - PAGE
---------	----------------------

Target Details

Target:	LITAF
Alternative Name:	LITAF (LITAF Products)
Background:	<p>Lipopolysaccharide-induced TNF-alpha factor, also known as LITAF, is a small integral membrane protein of lysosome/late endosome. LITAF mediates the expression of inflammatory cytokines such as TNF-alpha in Lipopolysaccharide-induced processes. LITAF binds to STAT6B, a member of the STAT6 family forming a complex on the TNF-alpha promoter that modulates TNF activity. High levels of expression of LITAF mRNA have been observed predominantly in the placenta, peripheral blood leukocytes, lymph nodes and spleen. Recombinant human LITAF protein, fused to His-tag at N-terminus, was expressed in E.coli.</p>

Target Details

Molecular Weight:	19.2 kDa (181aa)
NCBI Accession:	NP_004853
Pathways:	Cellular Response to Molecule of Bacterial Origin

Application Details

Comment:	Synonyms: Lipopolysaccharide-induced TNF-alpha factor, PIG7, SIMPLE
Restrictions:	For Research Use only

Handling

Format:	Liquid
Concentration:	1 mg/ml (determined by Bradford assay)
Buffer:	20 mM Tris-HCl buffer (pH 8.0) containing 0.4 M Urea, 10% glycerol
Storage:	4 °C
Storage Comment:	Avoid repeated freezing and thawing cycles.

Images

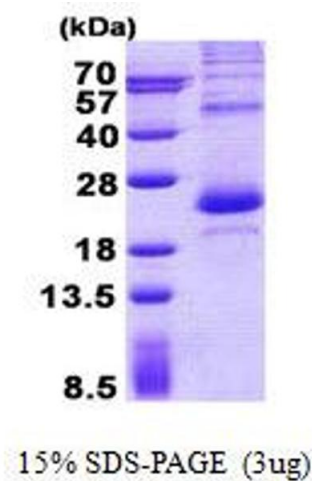


Image 1.