

Datasheet for ABIN1098771 DNAL1 Protein (His tag)



[Go to Product page](#)

1 Image

Overview

Quantity:	100 µg
Target:	DNAL1
Origin:	Human
Source:	Escherichia coli (E. coli)
Protein Type:	Recombinant
Purification tag / Conjugate:	This DNAL1 protein is labelled with His tag.
Application:	SDS-PAGE (SDS)

Product Details

Purity:	> 90 % by SDS - PAGE
---------	----------------------

Target Details

Target:	DNAL1
Alternative Name:	DNAL1 (DNAL1 Products)
Background:	DNAL1 is an axonemal dynein light chain which functions as a component of the outer dynein arms complex. This complex acts as the molecular motor that provides the force to move cilia in an ATP-dependent manner. DNAL1 is expressed in tissues with motile cilia or flagella and may be involved in the movement of sperm flagella. Alternate splicing results in multiple transcript variants. Recombinant human DNAL1 protein, fused to His-tag at N-terminus, was expressed in E.coli.
Molecular Weight:	23.9 kDa (213aa)

Target Details

NCBI Accession: [NP_113615](#)

Application Details

Comment: Synonyms: Dynein light chain 1, axonemal, C14orf168, CILD16

Restrictions: For Research Use only

Handling

Format: Liquid

Concentration: 1 mg/ml (determined by Bradford assay)

Buffer: 20 mM Tris-HCl buffer (pH 8.0) containing 0.4 M Urea, 10% glycerol

Storage: 4 °C

Storage Comment: Avoid repeated freezing and thawing cycles.

Images

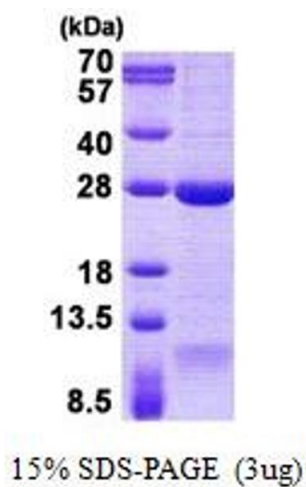


Image 1.