

Datasheet for ABIN1098775 **RAB10 Protein (His tag)**



[Go to Product page](#)

1 Image

Overview

| | |
|-------------------------------|--|
| Quantity: | 50 µg |
| Target: | RAB10 |
| Origin: | Human |
| Source: | Escherichia coli (E. coli) |
| Protein Type: | Recombinant |
| Purification tag / Conjugate: | This RAB10 protein is labelled with His tag. |
| Application: | SDS-PAGE (SDS) |

Product Details

| | |
|---------|----------------------|
| Purity: | > 90 % by SDS - PAGE |
|---------|----------------------|

Target Details

| | |
|-------------------|--|
| Target: | RAB10 |
| Alternative Name: | RAB10 (RAB10 Products) |
| Background: | RAB10 is a member of the Ras superfamily of small GTP-binding proteins. This protein is a key regulator of endocytic recycling, especially in the basolateral recycling pathways of polarized epithelial cells. It is required for the recruitment of CNT-1 to endosomal membranes in the intestinal epithelium. Recombinant human RAB10 protein, fused to His-tag at N-terminus, was expressed in E.coli. |
| Molecular Weight: | 24.7 kDa(220aa) |
| NCBI Accession: | NP_057215 |

Target Details

Pathways: [Asymmetric Protein Localization, SARS-CoV-2 Protein Interactome](#)

Application Details

Comment: Synonyms: Ras-related GTP-binding protein RAB10, RAB10

Restrictions: For Research Use only

Handling

Format: Liquid

Concentration: 0.5 mg/ml (determined by Bradford assay)

Buffer: 20 mM Tris-HCl buffer (pH 8.0) containing 10% glycerol 0.4 M Urea

Storage: 4 °C

Storage Comment: Avoid repeated freezing and thawing cycles.

Images

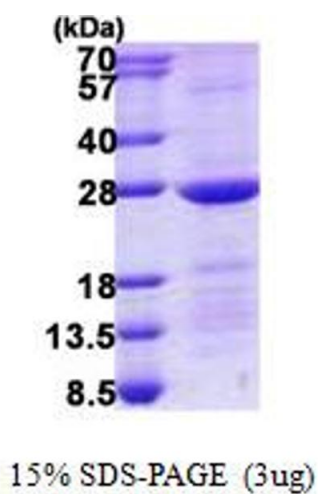


Image 1.