

Datasheet for ABIN1098779

SSX1 Protein (His tag)[Go to Product page](#)**1** Image

Overview

Quantity:	50 µg
Target:	SSX1
Origin:	Human
Source:	Escherichia coli (E. coli)
Protein Type:	Recombinant
Purification tag / Conjugate:	This SSX1 protein is labelled with His tag.
Application:	SDS-PAGE (SDS)

Product Details

Purity: > 85 % by SDS - PAGE

Target Details

Target:	SSX1
Alternative Name:	SSX1 (SSX1 Products)

Background: Protein SSX1 belongs to the family of highly homologous synovial sarcoma X (SSX) breakpoint proteins. SSX proteins are localized to the nucleus and expressed in testis and several types of cancers and, therefore, they are classified as C/T (cancer/testis) antigens. These proteins may function as transcriptional repressors. SSX1 genes have been involved in the t (X,18) translocation characteristically found in all synovial sarcomas. This translocation results in the fusion of the synovial sarcoma translocation gene on chromosome 18 to one of the SSX genes on chromosome X. The encoded hybrid proteins are probably responsible for transforming activity. Recombinant human SSX1 protein, fused to His-tag at N-terminus, was expressed in

Target Details

E.coli.

Molecular Weight: 24.3 kDa (211aa)

NCBI Accession: [NP_005626](#)

Application Details

Comment: Synonyms: Protein SSX1, CT5.1, SSRC

Restrictions: For Research Use only

Handling

Format: Liquid

Concentration: 1 mg/ml (determined by Bradford assay)

Buffer: 20 mM Tris-HCl buffer (pH 8.0) containing 0.4 M Urea, 10% glycerol

Storage: 4 °C

Storage Comment: Avoid repeated freezing and thawing cycles.

Images

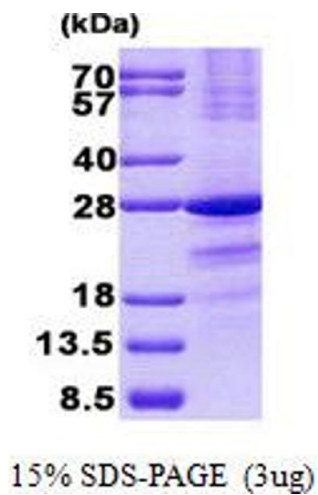


Image 1.