

Datasheet for ABIN109878 **anti-Relaxin 2 antibody**

3 Images



[Go to Product page](#)

Overview

Quantity:	100 µL
Target:	Relaxin 2 (RLN2)
Reactivity:	Human
Host:	Rabbit
Clonality:	Polyclonal
Application:	Western Blotting (WB), ELISA, Immunohistochemistry (IHC), Radioimmunoassay (RIA)

Product Details

Immunogen:	purified human Relaxin-2
Specificity:	The following proteins were tested for crossreactivity and were found to

Target Details

Target:	Relaxin 2 (RLN2)
Alternative Name:	Relaxin-2 (RLN2 Products)
Gene ID:	6019
Pathways:	Hormone Activity

Application Details

Application Notes:	RIA (1/15.000)2 ELISA (1/5000)1 Immunostaining (1/300)3 Western blot (1/200) This antibody has not been tested for use in all applications. This does not necessarily exclude its use for non-tested procedures. The stated dilutions are recommendations only. We suggest that the
--------------------	---

Application Details

applicant titrates the antibody in his/her system using appropriate negative/positive controls.

Restrictions: For Research Use only

Handling

Format: Lyophilized

Reconstitution: Resuspend in aqua bidest.

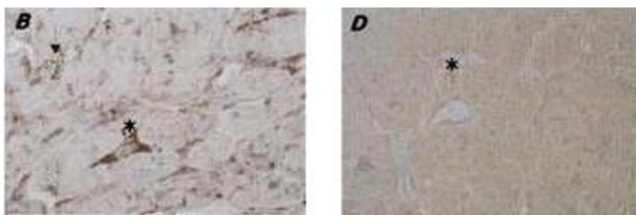
Storage: 4 °C

Images



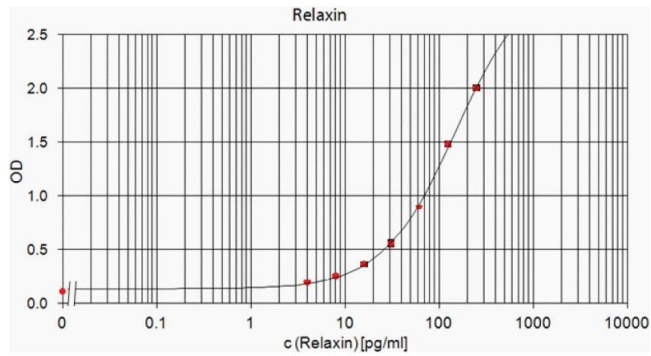
SDS-PAGE

Image 1. Immuno Blot analysis of Relaxin. Synthetic HI (100 ng) and recombinant H2 (500 ng) Relaxin were separated by SDS-PAGE and immunoblotted With ABIN109880 (1:200).



Immunohistochemistry

Image 2. Immunohistochemistry image of Relaxin staining in paraffin sections of left ventricular tissue from a patient demonstrating dilated cardiomyopathy. The section was incubated With ABIN109880 (1 BOO) for 24h. DAB was used as the chromogen. The section was counterstained With hematoxylin and eosin. B. ABIN109880 stains myocytes (not shown) and interstitial cells (asterisk) of the myocardium. D. Control section incubated With serum from nonimmunized rabbit



ELISA

Image 3. ELISA standard curve showing measurement of human Relaxin in a sandwich immunoassay using ABIN109877 as detection antibody. OD was determined at 450 nm. The shown standard curve is for demonstration purposes only and can be influenced by buffer, incubation conditions or dilution of the conjugate.