

Datasheet for ABIN1098785  
**CHRAC1 Protein (His tag)**



[Go to Product page](#)

1 Image

## Overview

Quantity:	100 µg
Target:	CHRAC1
Origin:	Human
Source:	Escherichia coli (E. coli)
Protein Type:	Recombinant
Purification tag / Conjugate:	This CHRAC1 protein is labelled with His tag.
Application:	SDS-PAGE (SDS)

## Product Details

Purity: > 90 % by SDS - PAGE

## Target Details

Target:	CHRAC1
Alternative Name:	CHRAC1 ( <a href="#">CHRAC1 Products</a> )
Background:	CHRAC1 is a histone-fold protein that interacts with other histone-fold proteins to bind DNA in a sequence-independent manner. These histone-fold protein dimers combine within larger enzymatic complexes for DNA transcription, replication, and packaging. Recombinant human CHRAC1 protein, fused to His-tag at N-terminus, was expressed in E.coli.
Molecular Weight:	17.1 kDa (154aa)
NCBI Accession:	<a href="#">NP_059140</a>

## Application Details

Comment: Synonyms: Chromatin accessibility complex 1, CHARC15, CHRAC-1, CHRAC-15, CHRAC15, YCL1

Restrictions: For Research Use only

## Handling

Format: Liquid

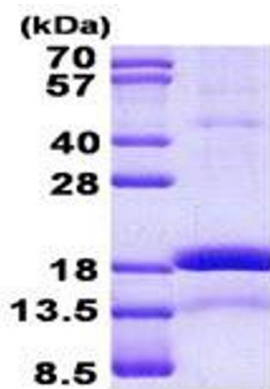
Concentration: 1 mg/ml (determined by Bradford assay)

Buffer: 20 mM Tris-HCl buffer (pH 8.0) containing 0.4 M urea, 10% glycerol

Storage: 4 °C

Storage Comment: Avoid repeated freezing and thawing cycles.

## Images



15% SDS-PAGE (3ug)

