



Datasheet for ABIN1098795 MRPL13 Protein (His tag)



[Go to Product page](#)

1 Image

Overview

Quantity:	100 µg
Target:	MRPL13
Origin:	Human
Source:	Escherichia coli (E. coli)
Protein Type:	Recombinant
Purification tag / Conjugate:	This MRPL13 protein is labelled with His tag.
Application:	SDS-PAGE (SDS)

Product Details

Purity: > 85 % by SDS - PAGE

Target Details

Target: MRPL13

Alternative Name: MRPL13 ([MRPL13 Products](#))

Background: Mammalian mitochondrial ribosomal proteins are encoded by nuclear genes and help in protein synthesis within the mitochondrion. Mitochondrial ribosomes (mitoribosomes) consist of a small 28S subunit and a large 39S subunit. They have an estimated 75% protein to rRNA composition compared to prokaryotic ribosomes, where this ratio is reversed. Another difference between mammalian mitoribosomes and prokaryotic ribosomes is that the latter contain a 5S rRNA. Among different species, the proteins comprising the mitoribosome differ greatly in sequence, and sometimes in biochemical properties, which prevents easy recognition by sequence homology. MRPL13 is a 39S subunit protein. Recombinant human MRPL13

Target Details

protein, fused to His-tag at N-terminus, was expressed in E.coli.

Molecular Weight: 23.1 kDa (201aa)

NCBI Accession: [NP_054797](#)

Application Details

Comment: Synonyms: Mitochondrial ribosomal protein L13, L13, L13A, L13mt, RPL13, RPML13

Restrictions: For Research Use only

Handling

Format: Liquid

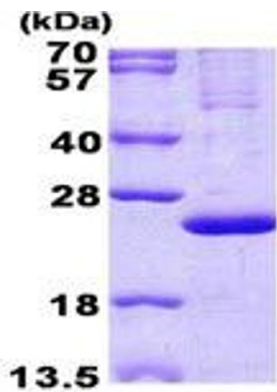
Concentration: 1 mg/ml (determined by Bradford assay)

Buffer: 20 mM Tris-HCl buffer (pH 8.0) containing 0.4 M urea, 10% glycerol

Storage: 4 °C

Storage Comment: Avoid repeated freezing and thawing cycles.

Images



15% SDS-PAGE (3ug)

Image 1.