

## Datasheet for ABIN1098797 CRLF2 Protein (His tag)



[Go to Product page](#)

### 1 Image

#### Overview

Quantity:	100 µg
Target:	CRLF2
Origin:	Human
Source:	Escherichia coli (E. coli)
Protein Type:	Recombinant
Purification tag / Conjugate:	This CRLF2 protein is labelled with His tag.
Application:	SDS-PAGE (SDS)

#### Product Details

Purity: > 85 % by SDS - PAGE

#### Target Details

Target:	CRLF2
Alternative Name:	CRLF2 ( <a href="#">CRLF2 Products</a> )
Background:	<p>CRLF2 is a receptor for thymic stromal lymphopoietin (TSLP). Together with the interleukin 7 receptor (IL7R), the protein and TSLP activate STAT3, STAT5, and JAK2 pathways, which control processes such as cell proliferation and development of the hematopoietic system.</p> <p>Two transcript variants encoding different isoforms have been found for this gene.</p> <p>Recombinant human CRLF2 protein, fused to His-tag at N-terminus, was expressed in E.coli.</p>
Molecular Weight:	26.6 kDa (232aa)
NCBI Accession:	<a href="#">NP_071431</a>

## Application Details

Comment: Synonyms: Cytokine receptor-like factor 2 isoform 1 precursor, CRL2, CRLF2Y, TSLPR

Restrictions: For Research Use only

## Handling

Format: Liquid

Concentration: 1 mg/ml (determined by Bradford assay)

Buffer: 20 mM Tris-HCl buffer (pH 8.0) containing 0.4 M UREA, 10% glycerol

Storage: 4 °C

Storage Comment: Avoid repeated freezing and thawing cycles.

## Images

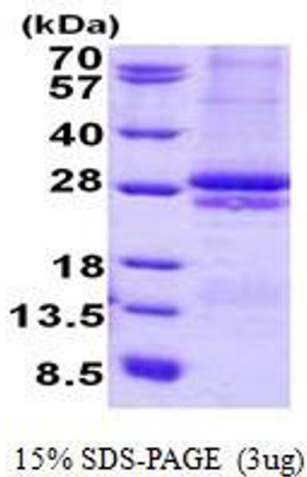


Image 1.