

Datasheet for ABIN109894

anti-Thymosin alpha 1 antibody**1** Image[Go to Product page](#)

Overview

Quantity:	100 µL
Target:	Thymosin alpha 1
Reactivity:	Human
Host:	Rabbit
Clonality:	Polyclonal
Conjugate:	This Thymosin alpha 1 antibody is un-conjugated
Application:	ELISA

Product Details

Immunogen:	Synthetic human Thymosin 615371,(aa 2-29) KLH conjugated (sdaavdtssseittkdlkekkeveeaen)
Specificity:	Human Thymosin 615371 There were no cross reactivities obtained against human Thymosin 615384 and human Thymulin.

Target Details

Target:	Thymosin alpha 1
Alternative Name:	Thymosin alpha1 (Thymosin alpha 1 Products)
Background:	Serum
Gene ID:	5757

Application Details

Application Notes: ELISA (1/4.000) This antibody has not been tested for use in all applications. This does not necessarily exclude its use for non-tested procedures. The stated dilutions are recommendations only. We suggest that the applicant titrates the antibody in his/her system using appropriate negative/positive controls.

Restrictions: For Research Use only

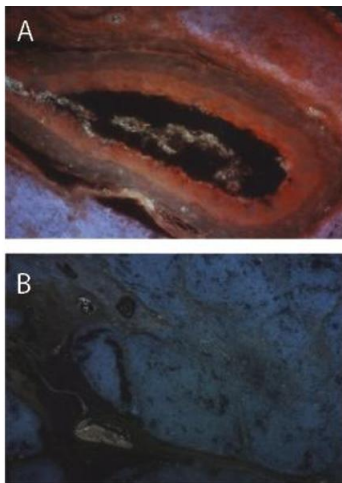
Handling

Format: Lyophilized

Reconstitution: Resuspend in aqua bidest.

Storage: 4 °C

Images



Immunofluorescence

Image 1. Immunofluorescence image of Thymosin staining in paraffin section of human juvenile thymus. A. The section was incubated With ABIN109894 (1:100) followed by an appropriate secondary antibody coupled to Cy3. The nuclei were stained With DAPI. Original magnification: x20. B. Control section without primary antibody. Original magnification: x10.