

Datasheet for ABIN109966
anti-NPR1 antibody (AA 294-308)[Go to Product page](#)

1 Image

Overview

Quantity:	100 µL
Target:	NPR1
Binding Specificity:	AA 294-308
Reactivity:	Human
Host:	Rabbit
Clonality:	Polyclonal
Conjugate:	This NPR1 antibody is un-conjugated
Application:	Western Blotting (WB), Immunohistochemistry (Paraffin-embedded Sections) (IHC (p))

Product Details

Immunogen:	Synthetic human NPR-A (aa 294-308) KLH conjugated (LKQLKHLAYEQFNFT)
Specificity:	Synthetic human NPR-A (aa 294-308)
Purification:	Rabbit Anti-RelB (Ab-573) Polyclonal Antibody is affinity-purified from rabbit antiserum by affinity chromatography using epitope-specific immunogen.

Target Details

Target:	NPR1
Alternative Name:	Natriuretic Peptide Receptor A (NPR1 Products)
Background:	Lyophilized
Gene ID:	4881

Application Details

Application Notes: Western Blot (1/5000), Immunohistology (paraffin sections 1/4000) This antibody has not been tested for use in all applications. This does not necessarily exclude its use for non-tested procedures. The stated dilutions are recommendations only. We suggest that the applicant titrates the antibody in his/her system using appropriate negative/positive controls.

Restrictions: For Research Use only

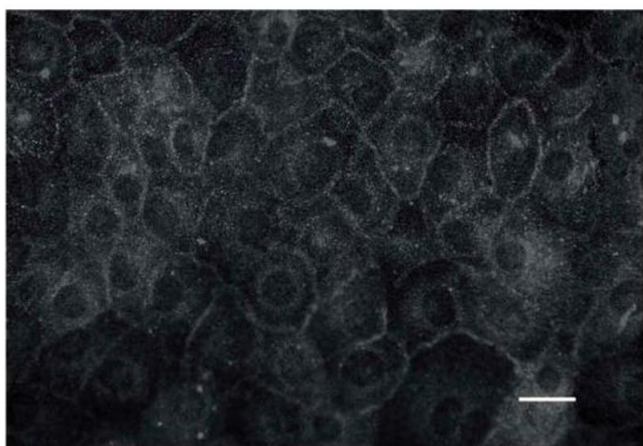
Handling

Format: Lyophilized

Reconstitution: Resuspend in aqua bidest.

Storage: 4 °C

Images



Immunocytochemistry

Image 1. Immunocytochemistry image of NPR-A staining in cultured red rat inner medullary collecting duct (IMCD) cells. The cells were grown on glass slides and fixed in 4% paraformaldehyde. The cells were incubated with ABIN109965 for 90 minutes, followed by an appropriate secondary antibody coupled to Alexa 488. Scale bar 20µm. Klokke J et al. (2009) Am J Physiol Renal Physiol 297: F693-F703