

Datasheet for ABIN1099759
anti-ABCA1 antibody (AA 116-130)

2 Images

[Go to Product page](#)

Overview

Quantity:	50 µL
Target:	ABCA1
Binding Specificity:	AA 116-130
Reactivity:	Mouse, Human
Host:	Rabbit
Clonality:	Polyclonal
Conjugate:	This ABCA1 antibody is un-conjugated
Application:	Western Blotting (WB), Immunohistochemistry (IHC), Immunohistochemistry (Paraffin-embedded Sections) (IHC (p))

Product Details

Brand:	IHC-plus™
Immunogen:	Synthetic peptide
	Type of Immunogen: Synthetic peptide
Isotype:	IgG
Specificity:	This Polyclonal antibody is directed against human ABCA1 protein. The product was purified from serum by protein A chromatography. Expect reactivity with human ABCA1. Cross-reactivity with ABCA1 from other sources has not been determined.
Purification:	Affinity purified

Target Details

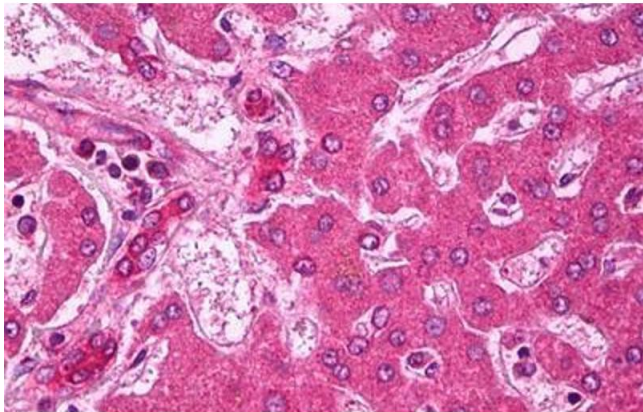
Target:	ABCA1
Alternative Name:	ABCA1 (ABCA1 Products)
Background:	Name/Gene ID: ABCA1 Subfamily: ATP-binding cassette - ABCA/ABC1 Family: Transporter Synonyms: ABCA1, ABC-1, ABC1, CERP, HDLDT1, Tangier disease, ATP-binding cassette 1, Td, Membrane-bound, TGD
Gene ID:	19
UniProt:	O95477
Pathways:	Cellular Response to Molecule of Bacterial Origin , cAMP Metabolic Process , Regulation of Lipid Metabolism by PPARalpha , Lipid Metabolism

Application Details

Application Notes:	Approved: IHC, IHC-P (1:100), WB (1:500 - 1:5000)
Comment:	Target Species of Antibody: Human
Restrictions:	For Research Use only

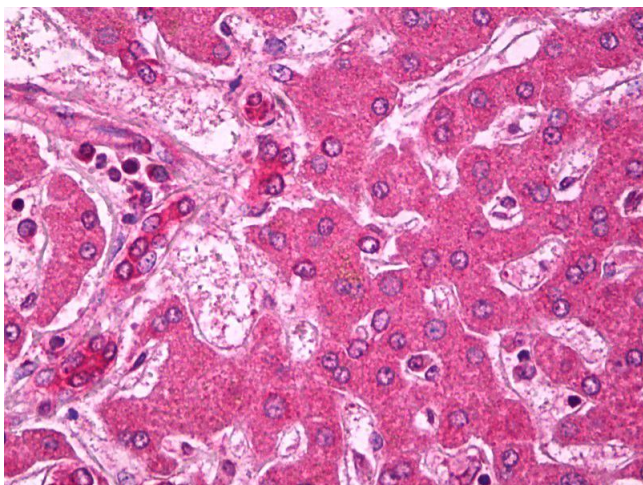
Handling

Format:	Liquid
Concentration:	Lot specific
Buffer:	PBS, pH 7.4, 0.02 % sodium azide
Preservative:	Sodium azide
Precaution of Use:	This product contains Sodium azide: a POISONOUS AND HAZARDOUS SUBSTANCE which should be handled by trained staff only.
Handling Advice:	avoid freeze thaw cycles.
Storage:	4 °C, -20 °C
Storage Comment:	Short term 4°C, long term aliquot and store at -20°C, avoid freeze-thaw cycles.



Immunohistochemistry

Image 1. Anti-ABCA1 antibody IHC staining of human liver. Immunohistochemistry of formalin-fixed, paraffin-embedded tissue after heat-induced antigen retrieval. Antibody ABIN1099759 dilution 1:100.



Immunohistochemistry

Image 2. Anti-ABCA1 antibody IHC of human liver. Immunohistochemistry of formalin-fixed, paraffin-embedded tissue after heat-induced antigen retrieval. Antibody dilution 1:100.