



Datasheet for ABIN1099768  
**anti-Abcd2 antibody (AA 460-473)**



[Go to Product page](#)

1 Image

Overview

Quantity:	100 µg
Target:	Abcd2
Binding Specificity:	AA 460-473
Reactivity:	Human
Host:	Goat
Clonality:	Polyclonal
Conjugate:	This Abcd2 antibody is un-conjugated
Application:	Western Blotting (WB), ELISA

Product Details

Immunogen:	Synthetic peptide C-PLSDTLAIKGVKVID from an internal region of human ABCD2 (NP_005155.1). Percent identity by BLAST analysis: Human, Chimpanzee, Gorilla, Orangutan, Gibbon, Monkey (100%), Marmoset, Mouse, Rat, Hamster, Elephant, Rabbit (93%), Galago, Bat, Bovine, Horse, Guinea pig (86%).  Type of Immunogen: Synthetic peptide
Specificity:	Human ABCD2. No cross-reactivity expected with ABCD1.
Predicted Reactivity:	Percent identity by BLAST analysis: Human, Chimpanzee, Gorilla, Orangutan, Gibbon, Monkey (100%) Marmoset, Mouse, Rat, Hamster, Elephant, Rabbit (93%) Galago, Bat, Bovine, Horse, Guinea pig (86%).
Purification:	Immunoaffinity purified

## Target Details

---

Target:	Abcd2
Alternative Name:	ABCD2 / ALDR ( <a href="#">Abcd2 Products</a> )
Background:	Name/Gene ID: ABCD2 Subfamily: ATP-binding cassette - ABCD/ALD Family: Transporter  Synonyms: ABCD2, ALD1, ALDL1, ALDRP, ALDR, ABC39, Adrenoleukodystrophy-like 1, HALDR
Gene ID:	225
NCBI Accession:	<a href="#">NP_005155</a>
UniProt:	<a href="#">Q9UBJ2</a>
Pathways:	<a href="#">Monocarboxylic Acid Catabolic Process</a>

## Application Details

---

Application Notes:	Approved: Peptide-ELISA (1:32000), WB (0.5 - 2 µg/mL)  Usage: Peptide ELISA: antibody detection limit dilution 1:32000. Western blot: Approx 80kD band observed in Human Liver lysates (calculated MW of 83.2kD according to NP_005155.1). Recommended concentration: 0.5-2 µg/mL.
Comment:	Target Species of Antibody: Human
Restrictions:	For Research Use only

## Handling

---

Format:	Liquid
Concentration:	Lot specific
Buffer:	Tris-buffered saline, pH 7.3, 0.5 % BSA, 0.02 % sodium azide
Preservative:	Sodium azide
Precaution of Use:	This product contains Sodium azide: a POISONOUS AND HAZARDOUS SUBSTANCE which should be handled by trained staff only.
Handling Advice:	Minimize freezing and thawing.
Storage:	-20 °C

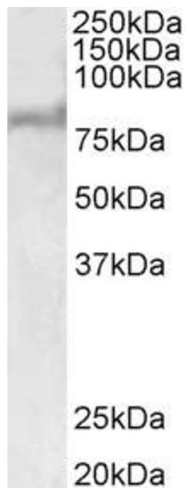
## Handling

---

Storage Comment: Store at -20°C. Avoid freeze-thaw cycles.

## Images

---



### Western Blotting

Image 1.