



Datasheet for ABIN1099916
anti-ALDOA antibody



[Go to Product page](#)

3 Images

Overview

Quantity:	500 µg
Target:	ALDOA
Reactivity:	Human, Rabbit
Host:	Goat
Clonality:	Polyclonal
Application:	Western Blotting (WB), ELISA, Immunohistochemistry (IHC), Immunofluorescence (IF), Immunoprecipitation (IP), Immunohistochemistry (Paraffin-embedded Sections) (IHC (p))

Product Details

Brand:	IHC-plus™
Immunogen:	Purified aldolase from rabbit muscle Type of Immunogen: Purified protein
Specificity:	Aldolase [Rabbit Muscle].
Purification:	Ion exchange chromatography

Target Details

Target:	ALDOA
Alternative Name:	ALDOA / Aldolase A (ALDOA Products)
Background:	Name/Gene ID: ALDOA

Target Details

Synonyms: ALDOA, ALDA, Aldolase, GSD12, Muscle-type aldolase, Lung cancer antigen NY-LU-1

Gene ID: 226

UniProt: [P04075](#)

Pathways: [Ribonucleoside Biosynthetic Process](#)

Application Details

Application Notes: Approved: ELISA, IF, IHC, IHC-P (5 µg/mL), IP, WB (1:1000)

Usage: Immunohistochemistry: This antibody was validated for use in immunohistochemistry on a panel of 21 formalin-fixed, paraffin-embedded (FFPE) human tissues after heat induced antigen retrieval in pH 6.0 citrate buffer. After incubation with the primary antibody, slides were incubated with biotinylated secondary antibody, followed by alkaline phosphatase-streptavidin and chromogen. The stained slides were evaluated by a pathologist to confirm staining specificity. The optimal working concentration for this antibody was determined to be 5 µg/mL.

Comment: Target Species of Antibody: Rabbit

Restrictions: For Research Use only

Handling

Format: Liquid

Concentration: Lot specific

Buffer: 0.02M PBS, pH 7.2, 0.01 % sodium azide

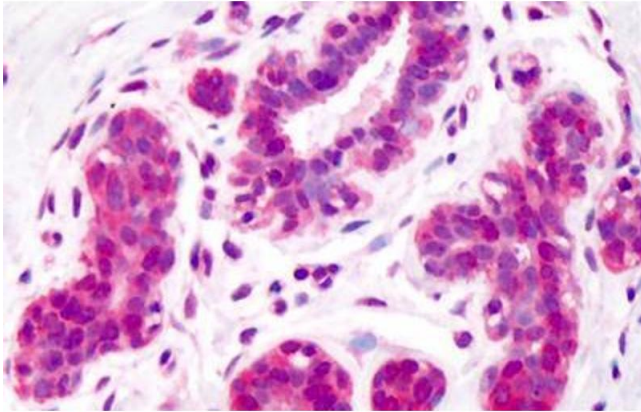
Preservative: Sodium azide

Precaution of Use: This product contains Sodium azide: a POISONOUS AND HAZARDOUS SUBSTANCE which should be handled by trained staff only.

Handling Advice: Avoid repeated freezing and thawing.

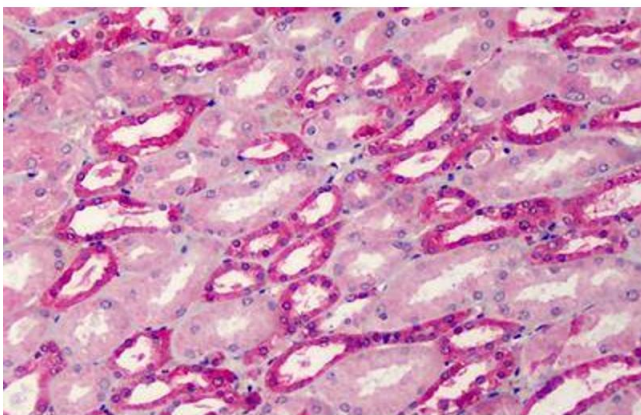
Storage: 4 °C, -20 °C

Storage Comment: 4°C or -20°C, Avoid freeze-thaw cycles.



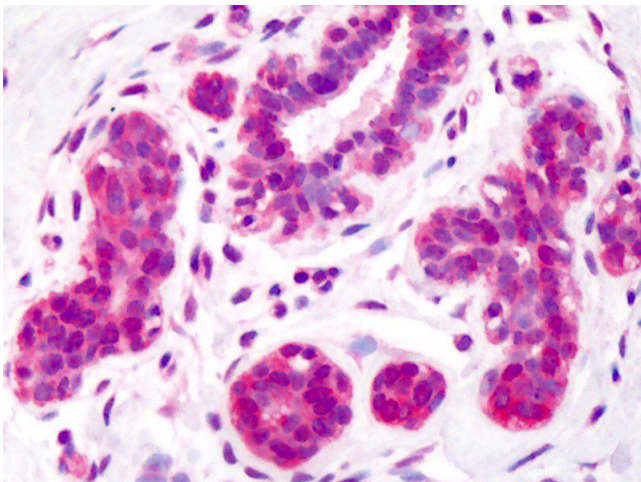
Immunohistochemistry

Image 1. Anti-Aldolase antibody IHC staining of human breast. Immunohistochemistry of formalin-fixed, paraffin-embedded tissue after heat-induced antigen retrieval. Antibody ABIN1099916 concentration 5 ug/ml.



Immunohistochemistry

Image 2. Anti-Aldolase antibody IHC staining of human kidney. Immunohistochemistry of formalin-fixed, paraffin-embedded tissue after heat-induced antigen retrieval. Antibody ABIN1099916 concentration 5 ug/ml.



Immunohistochemistry

Image 3. Anti-Aldolase antibody IHC of human breast. Immunohistochemistry of formalin-fixed, paraffin-embedded tissue after heat-induced antigen retrieval. Antibody concentration 5 ug/ml.