

Datasheet for ABIN1099923  
**anti-ACVRL1 antibody (C-Term)**



[Go to Product page](#)

1 Image

## Overview

Quantity:	100 µL
Target:	ACVRL1
Binding Specificity:	C-Term
Reactivity:	Human
Host:	Rabbit
Clonality:	Polyclonal
Conjugate:	This ACVRL1 antibody is un-conjugated
Application:	Western Blotting (WB), ELISA, Immunohistochemistry (IHC)

## Product Details

Immunogen:	A peptide from near the C terminal residues of human ACVRL1 protein Type of Immunogen: Synthetic peptide
Isotype:	IgG
Purification:	Affinity purified

## Target Details

Target:	ACVRL1
Alternative Name:	ACVRL1 / ALK1 ( <a href="#">ACVRL1 Products</a> )
Background:	Name/Gene ID: ACVRL1 Subfamily: Activin/TGFb

## Target Details

---

Family: Protein Kinase

Synonyms: ACVRL1, ALK1, Activin receptor-like kinase 1, ALK-1, ACVRLK1, HHT, HHT2, SKR3, TSR-I, ORW2

---

Gene ID: 94

---

UniProt: [P37023](#)

## Application Details

---

Application Notes: Approved: ELISA (1:1000 - 1:10000), IHC (1:100 - 1:300), WB (1:200 - 1:5000)

---

Comment: Target Species of Antibody: Human

---

Restrictions: For Research Use only

## Handling

---

Format: Liquid

---

Concentration: Lot specific

---

Buffer: PBS, pH 7.4, 0.02 % sodium azide

---

Preservative: Sodium azide

---

Precaution of Use: This product contains Sodium azide: a POISONOUS AND HAZARDOUS SUBSTANCE which should be handled by trained staff only.

---

Storage: -20 °C

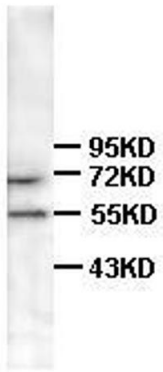
---

Storage Comment: Store at -20°C for up to 1 year.

---

Expiry Date: 12 months

**fetal heart**



**Western Blot analysis of fetal heart lysates with anti-ACVRL1 antibody**

**WB 1:200**

**Image 1.**