



[Go to Product page](#)

Datasheet for ABIN1099945
anti-ALKBH8 antibody (AA 141-190)

1 Image

Overview

Quantity:	100 µL
Target:	ALKBH8
Binding Specificity:	AA 141-190
Reactivity:	Human, Mouse, Guinea Pig, Horse, Dog, Monkey
Host:	Rabbit
Clonality:	Polyclonal
Conjugate:	This ALKBH8 antibody is un-conjugated
Application:	Western Blotting (WB)

Product Details

Immunogen:	Synthetic peptide located between aa141-190 of human ALKBH8 (Q96BT7, NP_620130). Percent identity by BLAST analysis: Human, Chimpanzee, Gorilla, Gibbon, Monkey, Marmoset (100%), Galago, Bovine, Horse, Guinea pig (85%), Mouse (78%). Type of Immunogen: Synthetic peptide
Isotype:	IgG
Specificity:	Human ALKBH8
Predicted Reactivity:	Percent identity by BLAST analysis: Horse, Guinea pig (85%).
Purification:	Protein A purified

Target Details

Target: ALKBH8

Alternative Name: ALKBH8 ([ALKBH8 Products](#))

Background: Name/Gene ID: ALKBH8

Synonyms: ALKBH8, AlkB homologue 8, ABH8

Gene ID: 91801

NCBI Accession: [NP_620130](#)

UniProt: [Q96BT7](#)

Application Details

Application Notes: Approved: WB (1 µg/mL)

Comment: Target Species of Antibody: Human

Restrictions: For Research Use only

Handling

Format: Lyophilized

Reconstitution: After adding water, will consist of PBS buffer with 2 % sucrose

Concentration: Lot specific

Buffer: Lyophilized from PBS with 2 % sucrose

Handling Advice: Avoid repeat freeze-thaw cycles.

Storage: 4 °C, -20 °C

Storage Comment: Long term: -20°C, the use of 50% glycerol is recommended if storing aliquots in -20°C for long term use (up to 1 year)
Short term (less than 1 week): 4°C. Avoid freeze-thaw cycles.

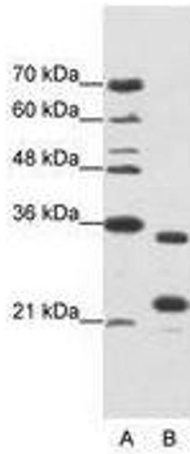


Image 1.