

Datasheet for ABIN1100315
anti-Betacellulin antibody[Go to Product page](#)

1 Image

Overview

Quantity:	50 µg
Target:	Betacellulin (BTC)
Reactivity:	Human
Host:	Rabbit
Clonality:	Polyclonal
Conjugate:	This Betacellulin antibody is un-conjugated
Application:	Western Blotting (WB), ELISA, Immunohistochemistry (IHC), Immunohistochemistry (Paraffin-embedded Sections) (IHC (p)), Neutralization (Neut)

Product Details

Brand:	IHC-plus™
Immunogen:	E.coli derived recombinant Human Betacellulin. Type of Immunogen: Cell extract
Isotype:	IgG
Specificity:	Human Betacellulin
Purification:	Immunoaffinity purified

Target Details

Target:	Betacellulin (BTC)
Alternative Name:	BTC / Betacellulin (BTC Products)

Target Details

Background:	Name/Gene ID: BTC Synonyms: BTC, Betacellulin, Probetacellulin
Gene ID:	685
UniProt:	P35070
Pathways:	RTK Signaling , Fc-epsilon Receptor Signaling Pathway , EGFR Signaling Pathway , Neurotrophin Signaling Pathway

Application Details

Application Notes:	Approved: ELISA, IHC, IHC-P (5 µg/mL), Neut (0.1 µg/mL), WB (0.1 - 0.2 µg/mL) Usage: Immunohistochemistry: LS-B7481 in an IHC-plus antibody, validated by our pathologists for use in IHC against formalin-fixed, paraffin-embedded human tissues (IHC validation procedure). A concentration of 5 µg/mL is recommended. Neutralization: To yield one-half maximal inhibition [ND] of the biological activity of Human Betacellulin (0.1 ng/mL), a concentration of &le. 0.1 µg/mL of this antibody is required. ELISA: To detect hBetacellulin by sandwich ELISA (using 100 µL/well antibody solution) a concentration of 0.5-2 µg/mL of this antibody is required. This antigen affinity purified antibody, in conjunction with Biotinylated Anti-Human Betacellulin (LS-C104290) as a detection antibody, allows the detection of at least 0.2-0.4 ng/well of recombinant hBetacellulin. Western Blot: To detect hBetacellulin by Western Blot analysis this antibody can be used at a concentration of 0.1-0.2 µg/mL. Used in conjunction with compatible secondary reagents the detection limit for recombinant hBetacellulin is 1.5-3 ng/lane, under either reducing or non-reducing conditions.
Comment:	Target Species of Antibody: Human
Restrictions:	For Research Use only

Handling

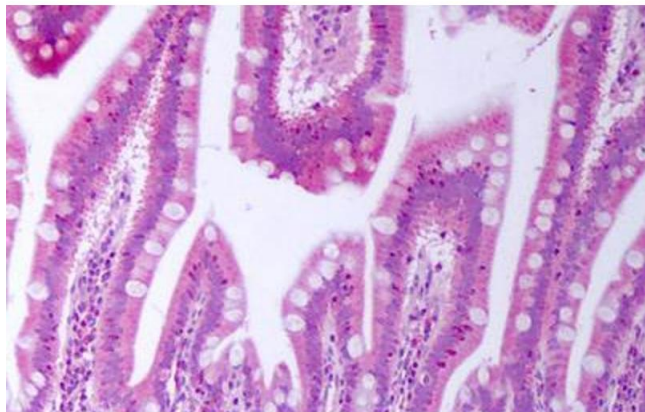
Format:	Lyophilized
Reconstitution:	Reconstitute in sterile water
Concentration:	Lot specific
Buffer:	Lyophilized from PBS, pH 7.2
Handling Advice:	Avoid freeze/thaw cycles.

Handling

Storage: 4 °C, -20 °C

Storage Comment: Store Lyophilized at room temperature up to 1 month
Reconstituted for up to 2 weeks at 2-8°C. Aliquot and freeze at -20°C for long term storage.
Avoid freeze/thaw cycles.

Images



Immunohistochemistry

Image 1. Anti-BTC antibody IHC staining of human small intestine. Immunohistochemistry of formalin-fixed, paraffin-embedded tissue after heat-induced antigen retrieval. Antibody ABIN1100315 concentration 5 ug/ml.