

Datasheet for ABIN1100348
anti-Complement C3c antibody

3 Images

[Go to Product page](#)

Overview

Quantity:	1 mL
Target:	Complement C3c (C3C)
Reactivity:	Human
Host:	Rabbit
Clonality:	Polyclonal
Conjugate:	This Complement C3c antibody is un-conjugated
Application:	Immunohistochemistry (Paraffin-embedded Sections) (IHC (p)), Immunodiffusion (ID)

Product Details

Brand:	IHC-plus™
Immunogen:	Human C3c Type of Immunogen: Purified protein
Specificity:	Human Complement C3c. In immunoelectrophoresis against fresh human serum, a single precipitin line is obtained in the beta-1 region representing native C3. Against serum containing partly activated C3, a precipitin line is obtained which extends from the beta-1 into the alpha-2 region, demonstrating a gradient. In old serum containing totally activated C3 a single precipitin line in the alpha-2 region is obtained. Antisera to C3c can also react with the fragments C3b, C3bi and smaller fragments, since they all carry antigenic determinants of the C3c domain. The product does not react with any other proteins component of human serum or plasma. Cross-reactivity Inter-species cross-reactivity is a normal feature of antibodies to plasma proteins, since homologous proteins of different species frequently share antigenic determinants. Cross-

Product Details

reactivity of this antiserum has not been tested in detail.

Purification: Immunoaffinity absorbed

Target Details

Target: Complement C3c (C3C)

Alternative Name: Complement C3/C3c ([C3C Products](#))

Application Details

Application Notes: Approved: ID, IHC-P (1:200)

Usage: This product is intended for use in precipitating techniques as immunoelectrophoresis and single and double radial immunodiffusion (Mancini, Ouchterlony) to identify the presence of complement C3c or to determine its concentration. The presence of non-precipitating antibodies has not been assayed. This does not exclude the use of the antiserum in non-precipitating antibody-binding techniques if proper controls are included. Determinations of individual complement components can be very useful in defining the exact location of a defect.

Restrictions: For Research Use only

Handling

Format: Lyophilized

Reconstitution: Sterile distilled water 1 ml

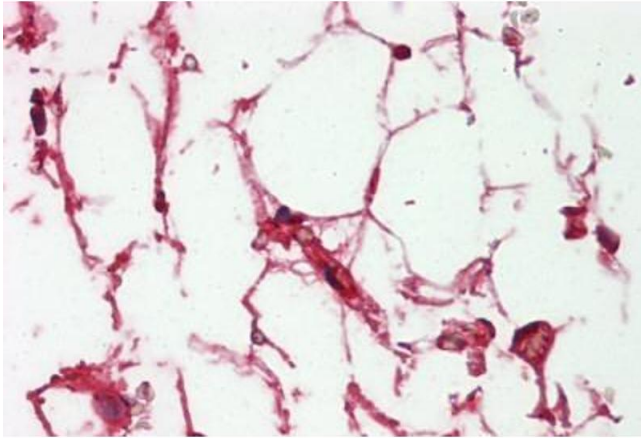
Concentration: Lot specific

Buffer: Lyophilized antiserum

Handling Advice: Avoid freeze/thaw cycles. Store undiluted.

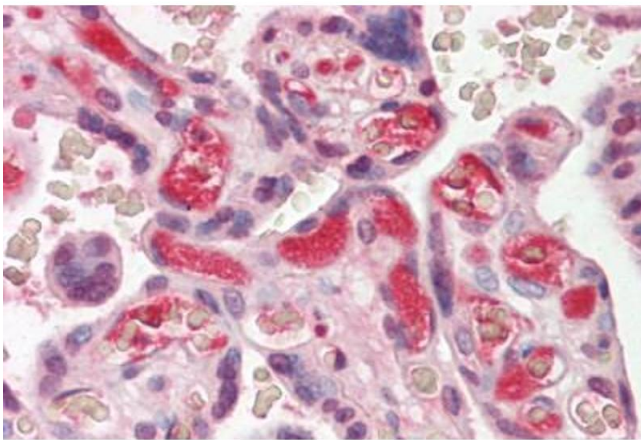
Storage: 4 °C, -20 °C

Storage Comment: Store lyophilized at 4°C. Once reconstituted, aliquot and store at -20°C. Avoid freeze/thaw cycles. Store undiluted.



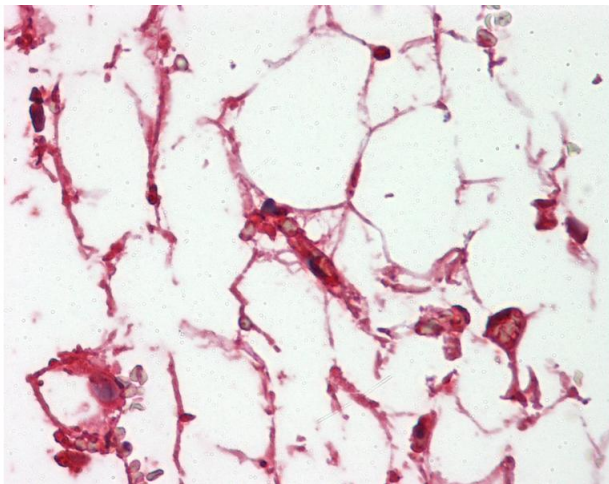
Immunohistochemistry

Image 1. Anti-Complement C3/C3c antibody IHC staining of human adrenal, adipocytes. Immunohistochemistry of formalin-fixed, paraffin-embedded tissue after heat-induced antigen retrieval. Antibody ABIN1100348 dilution 1:200.



Immunohistochemistry

Image 2. Anti-Complement C3/C3c antibody IHC staining of human placenta. Immunohistochemistry of formalin-fixed, paraffin-embedded tissue after heat-induced antigen retrieval. Antibody ABIN1100348 dilution 1:200.



Immunohistochemistry

Image 3. Anti-Complement C3/C3c antibody IHC of human adrenal, adipocytes. Immunohistochemistry of formalin-fixed, paraffin-embedded tissue after heat-induced antigen retrieval. Antibody dilution 1:200.