

Datasheet for ABIN1100376
anti-CADM2 antibody (Internal Region)

3 Images

[Go to Product page](#)

Overview

Quantity:	50 µg
Target:	CADM2
Binding Specificity:	Internal Region
Reactivity:	Human, Mouse, Rat, Pig, Cow, Horse, Monkey, Rabbit, Bat, Hamster, Chicken
Host:	Rabbit
Clonality:	Polyclonal
Conjugate:	This CADM2 antibody is un-conjugated
Application:	Immunohistochemistry (IHC), Immunohistochemistry (Paraffin-embedded Sections) (IHC (p))

Product Details

Brand:	IHC-plus™
Immunogen:	Synthetic 14 amino acid peptide from internal region of human CADM2. Percent identity with other species by BLAST analysis: Human, Chimpanzee, Gorilla, Orangutan, Gibbon, Monkey, Galago, Marmoset, Mouse, Rat, Hamster, Elephant, Panda, Bovine, Bat, Horse, Rabbit, Pig, Opossum, Turkey, Chicken, Platypus, Lizard (100%), Dog, Guinea pig, Zebra finch (93%). Type of Immunogen: Synthetic peptide
Specificity:	Human CADM2. BLAST analysis of the peptide immunogen showed no homology with other human proteins.
Predicted Reactivity:	Percent identity with other species by BLAST analysis: Human, Chimpanzee, Gorilla, Orangutan, Gibbon, Monkey, Galago, Marmoset, Mouse, Rat, Hamster, Elephant, Panda, Bovine, Bat, Horse,

Product Details

Rabbit, Pig, Opossum, Turkey, Chicken, Platypus, Lizard (100%) Dog, Guinea pig, Zebra finch (93%).

Purification: Immunoaffinity purified

Target Details

Target: CADM2

Alternative Name: CADM2 ([CADM2 Products](#))

Background: Name/Gene ID: CADM2

Synonyms: CADM2, Cell adhesion molecule 2, IGSF4D, Necl-3, Nectin-like 3, SynCAM2, Nectin-like protein 3, SynCAM 2, NECL3

Gene ID: 253559

Pathways: [Cell-Cell Junction Organization](#)

Application Details

Application Notes: Approved: IHC, IHC-P (10 µg/mL)

Usage: Immunohistochemistry: This antibody was validated for use in immunohistochemistry on a panel of 21 formalin-fixed, paraffin-embedded (FFPE) human tissues after heat induced antigen retrieval in pH 6.0 citrate buffer. After incubation with the primary antibody, slides were incubated with biotinylated secondary antibody, followed by alkaline phosphatase-streptavidin and chromogen. The stained slides were evaluated by a pathologist to confirm staining specificity. The optimal working concentration for this antibody was determined to be 10 µg/mL.

Comment: Target Species of Antibody: Human

Restrictions: For Research Use only

Handling

Format: Liquid

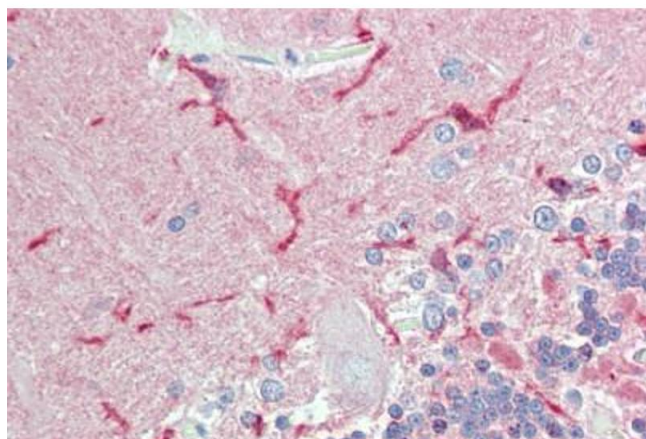
Concentration: Lot specific

Buffer: PBS, less than 0.1 % sodium azide.

Handling

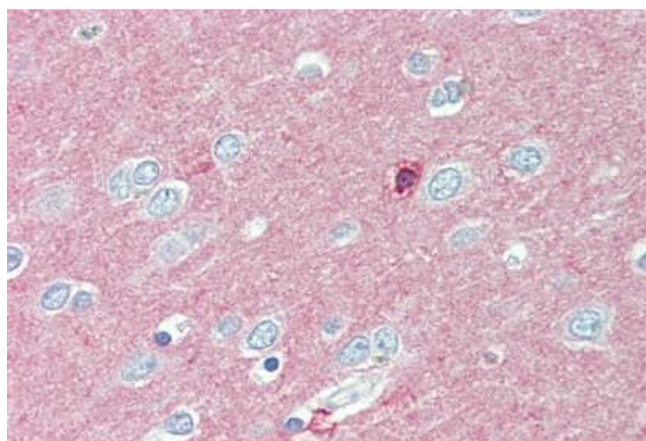
Preservative:	Sodium azide
Precaution of Use:	This product contains Sodium azide: a POISONOUS AND HAZARDOUS SUBSTANCE which should be handled by trained staff only.
Storage:	4 °C,-20 °C
Storage Comment:	Aliquot and store undiluted at -20°C or below for up to 1 year. Can be stored undiluted at 4°C for up to 1 month. Avoid freeze-thaw cycles.
Expiry Date:	12 months

Images



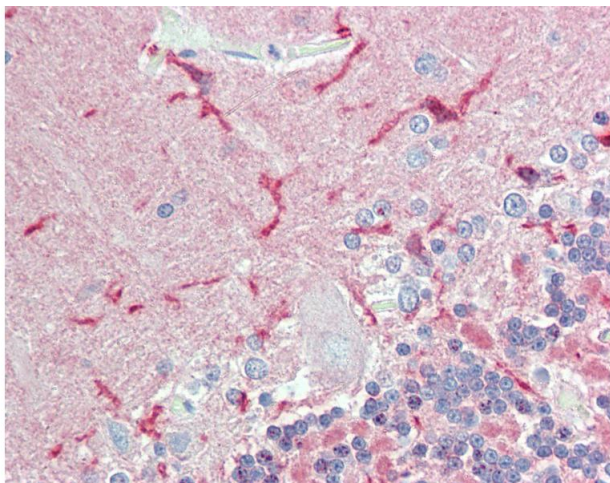
Immunohistochemistry

Image 1. Anti-CADM2 antibody ABIN1100376 IHC staining of human brain, cerebellum. Immunohistochemistry of formalin-fixed, paraffin-embedded tissue after heat-induced antigen retrieval.



Immunohistochemistry

Image 2. Anti-CADM2 antibody ABIN1100376 IHC staining of human brain, cortex. Immunohistochemistry of formalin-fixed, paraffin-embedded tissue after heat-induced antigen retrieval.



Immunohistochemistry

Image 3. Anti-CADM2 antibody IHC of human brain, cerebellum. Immunohistochemistry of formalin-fixed, paraffin-embedded tissue after heat-induced antigen retrieval.