

Datasheet for ABIN1100380
anti-CASR antibody (AA 214-235)



[Go to Product page](#)

2 Images

Overview

Quantity:	50 µg
Target:	CASR
Binding Specificity:	AA 214-235
Reactivity:	Human, Mouse, Rat, Pig, Cow, Monkey, Rabbit, Bat, Chicken, Dog, Hamster, Horse
Host:	Mouse
Clonality:	Monoclonal
Conjugate:	This CASR antibody is un-conjugated
Application:	Western Blotting (WB), Immunohistochemistry (IHC), Immunohistochemistry (Paraffin-embedded Sections) (IHC (p)), Immunohistochemistry (Frozen Sections) (IHC (fro))

Product Details

Brand:	IHC-plus™
Immunogen:	Synthetic peptide: ADDDYGRPGIEKFREEAEERDI, corresponding to amino acids 214-235 of Human Calcium Sensing Receptor. Percent identity by BLAST analysis: Human, Gorilla, Gibbon, Monkey, Marmoset, Mouse, Rat, Hamster, Elephant, Panda, Dog, Bat, Bovine, Horse, Rabbit, Pig, Opossum, Turkey, Chicken, Platypus (100%), Xenopus (95%), Stickleback, Pufferfish (86%). Type of Immunogen: Synthetic peptide
Clone:	ADD
Isotype:	IgG2a
Specificity:	Species cross-reactivity: Human, Rat and bovine.

Product Details

Predicted Reactivity: Percent identity by BLAST analysis: Human, Gorilla, Gibbon, Monkey, Marmoset, Mouse, Rat, Hamster, Elephant, Panda, Dog, Bat, Bovine, Horse, Rabbit, Pig, Opossum, Turkey, Chicken, Platypus (100%) Xenopus (95%) Stickleback, Pufferfish (86%).

Purification: Immunoaffinity purified

Target Details

Target: CASR

Alternative Name: CASR/Calcium Sensing Receptor ([CASR Products](#))

Background: Name/Gene ID: CASR
Subfamily: Calcium-sensing
Family: GPCR

Synonyms: CASR, Ca sensing receptor, Ca²⁺ sensing receptor, Calcium-sensing receptor, FIH, EIG8, GPRC2A, HHC, HHC1, Hypocalciuric hypercalcemia 1, PCAR1, NSHPT, CAR, FHH

Gene ID: 846

UniProt: [P41180](#)

Pathways: [Positive Regulation of Peptide Hormone Secretion, Carbohydrate Homeostasis](#)

Application Details

Application Notes: Approved: IHC, IHC-Fr (2 µg/mL), IHC-P (5 µg/mL), WB

Usage: Suitable for use in Western Blot and Immunohistochemistry.

Comment: Target Species of Antibody: Human

Restrictions: For Research Use only

Handling

Format: Liquid

Concentration: Lot specific

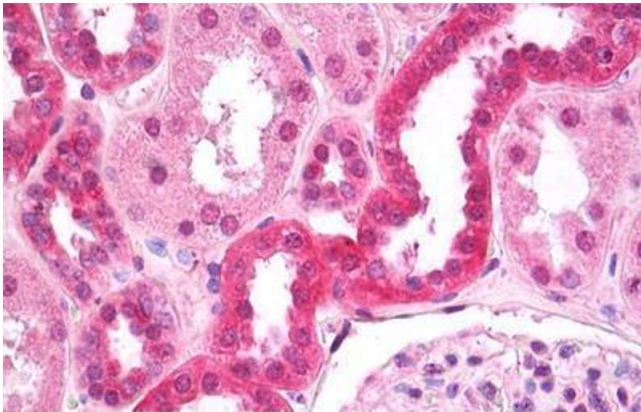
Buffer: PBS, 1 mg/mL BSA, 0.05 % sodium azide.

Preservative: Sodium azide

Handling

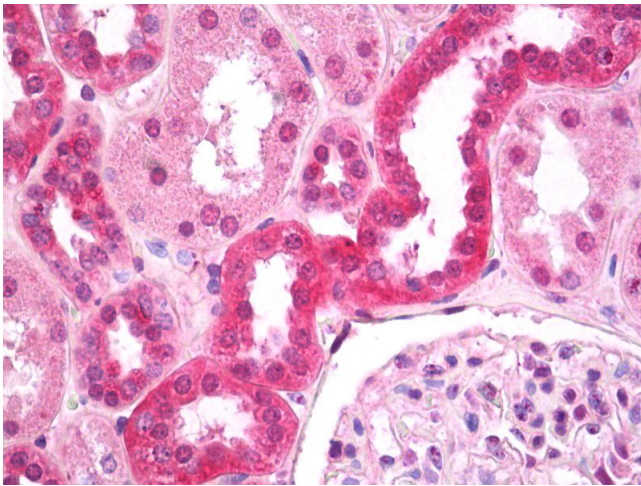
Precaution of Use:	This product contains Sodium azide: a POISONOUS AND HAZARDOUS SUBSTANCE which should be handled by trained staff only.
Handling Advice:	avoid freeze thaw cycles. Store undiluted.
Storage:	4 °C,-20 °C
Storage Comment:	Short term 4°C, long term aliquot and store at -20°C, avoid freeze-thaw cycles. Store undiluted.

Images



Immunohistochemistry

Image 1. Anti-FIH / CASR antibody IHC staining of human kidney, tubules. Immunohistochemistry of formalin-fixed, paraffin-embedded tissue after heat-induced antigen retrieval. Antibody ABIN1100380 dilution 5 ug/ml.



Immunohistochemistry

Image 2. Anti-FIH / CASR antibody IHC of human kidney, tubules. Immunohistochemistry of formalin-fixed, paraffin-embedded tissue after heat-induced antigen retrieval. Antibody dilution 5 ug/ml.