

Datasheet for ABIN1100975

anti-CSDA antibody**1** Image[Go to Product page](#)

Overview

Quantity:	100 µg
Target:	CSDA
Reactivity:	Borrelia burgdorferi
Host:	Rabbit
Clonality:	Polyclonal
Application:	Western Blotting (WB), ELISA

Product Details

Immunogen:	MBP-fusion protein corresponding to Borrelia burgdorferi Dbp-A protein. Type of Immunogen: Fusion protein
Isotype:	IgG
Specificity:	This antibody is specific for Borrelia burgdorferi DbpA protein. A BLAST analysis was used to suggest cross-reactivity with DbpA from Borrelia burgdorferi sources based on 100 % homology with the immunizing sequence. Partial reactivity is expected against Borrelia carinii sources based on 60-80 % homology. Cross-reactivity with DbpA from other sources has not been determined.
Purification:	Protein A purified

Target Details

Target:	CSDA
---------	------

Target Details

Alternative Name:	YBX3 / CSDA (CSDA Products)
Background:	Name/Gene ID: YBX3 Synonyms: YBX3, Cold-shock domain protein A, Cold shock domain protein A, CSDA, CSDA1, DNA-binding protein A, DBPA, ZONAB
Gene ID:	8531
UniProt:	P16989
Pathways:	Negative Regulation of intrinsic apoptotic Signaling

Application Details

Application Notes:	Approved: ELISA, WB (1:1000) Usage: This protein-A purified antibody has been tested for use in Western blotting. Specific conditions for reactivity should be optimized by the end user. Expect a band approximately 18.5 kD in size corresponding to Borrelia burgdorferi DbpA protein by Western blotting in the appropriate cell lysate or extract.
Comment:	Target Species of Antibody: Borrelia burgdorferi
Restrictions:	For Research Use only

Handling

Format:	Liquid
Reconstitution:	deionized water
Concentration:	Lot specific
Buffer:	0.02 M potassium phosphate, 0.15 M sodium chloride, pH 7.2, 0.01 % sodium azide
Preservative:	Sodium azide
Precaution of Use:	This product contains Sodium azide: a POISONOUS AND HAZARDOUS SUBSTANCE which should be handled by trained staff only.
Handling Advice:	avoid freeze thaw cycles.
Storage:	4 °C,-20 °C
Storage Comment:	Short term 4°C, long term aliquot and store at -20°C, avoid freeze-thaw cycles.

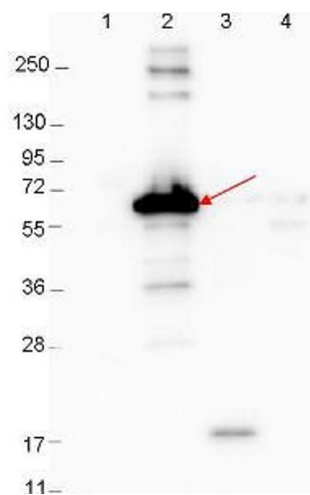


Image 1.