

## Datasheet for ABIN1101028

**anti-CXCL12 antibody**

## 2 Images

[Go to Product page](#)

## Overview

Quantity:	50 µg
Target:	CXCL12
Reactivity:	Human
Host:	Rabbit
Clonality:	Polyclonal
Conjugate:	This CXCL12 antibody is un-conjugated
Application:	Western Blotting (WB), Immunohistochemistry (IHC), ELISA, Immunohistochemistry (Paraffin-embedded Sections) (IHC (p)), Neutralization (Neut)

## Product Details

Brand:	IHC-plus™
Immunogen:	E.coli derived recombinant Human SDF-1alpha. Type of Immunogen: Cell extract
Isotype:	IgG
Specificity:	Human SDF-1alpha
Purification:	Immunoaffinity purified

## Target Details

Target:	CXCL12
Alternative Name:	SDF-1 / CXCL12 ( <a href="#">CXCL12 Products</a> )

## Target Details

Background:	Name/Gene ID: CXCL12 Subfamily: Interocrine alpha Family: Interocrine  Synonyms: CXCL12, C-X-C motif chemokine 12, HIRH, IRH, SDF-1, SDF-1b, SDF1A, SDF1B, TPAR1, TLSF-a, TLSF-b, SDF-1a, SDF1, Sdf1alpha, Stromal cell-derived factor 1, TLSF, HSDF-1, PBSF, SCYB12
Gene ID:	6387
UniProt:	<a href="#">P48061</a>
Pathways:	<a href="#">Regulation of Cell Size</a> , <a href="#">CXCR4-mediated Signaling Events</a> , <a href="#">Negative Regulation of intrinsic apoptotic Signaling</a>

## Application Details

Application Notes:	Approved: ELISA, IHC, IHC-P (2.5 µg/mL), Neut (2 - 4 µg/mL), WB (0.1 - 0.2 µg/mL)  Usage: Immunohistochemistry: LS-B7489 in an IHC-plus antibody, validated by our pathologists for use in IHC against formalin-fixed, paraffin-embedded human tissues (IHC validation procedure). A concentration of 2.5 µg/mL is recommended. Neutralization: To yield one-half maximal inhibition [ND] of the biological activity of Human SDF-1alpha (100 ng/mL), a concentration of 2-4 µg/mL of this antibody is required. ELISA: To detect Human SDF-1alpha by sandwich ELISA (using 100 µL/well antibody solution) a concentration of 0.5-2 µg/mL of this antibody is required. This antigen affinity purified antibody, in conjunction with Biotinylated Anti-Human SDF-1alpha (LS-C104650) as a detection antibody, allows the detection of at least 0.2-0.4 ng/well of recombinant Human SDF-1alpha. Western Blot: To detect Human SDF-1alpha by Western Blot analysis this antibody can be used at a concentration of 0.1-0.2 µg/mL. When used in conjunction with compatible secondary reagents, the detection limit for recombinant Human SDF-1alpha is 1.5-3 ng/lane, under either reducing or non-reducing conditions.
Comment:	Target Species of Antibody: Human
Restrictions:	For Research Use only

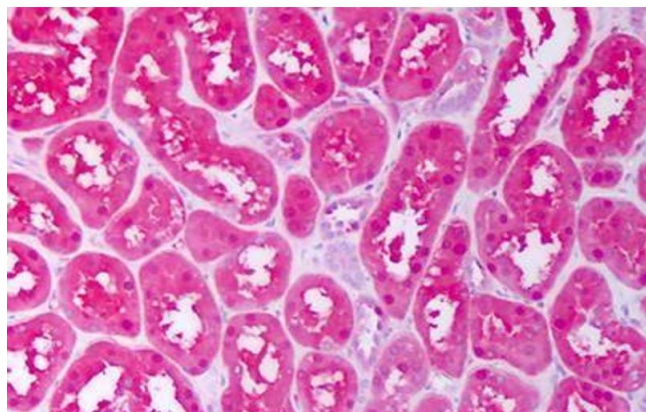
## Handling

Format:	Lyophilized
Reconstitution:	Sterile water

## Handling

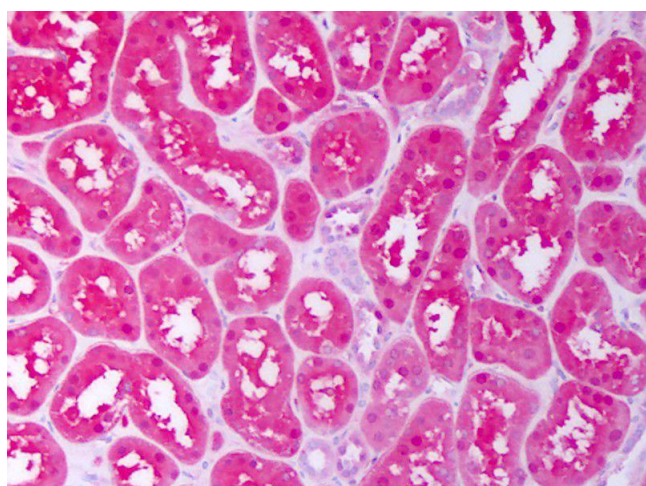
Concentration:	Lot specific
Buffer:	Lyophilized from PBS, pH 7.2
Handling Advice:	Avoid freeze/thaw cycles.
Storage:	4 °C,-20 °C
Storage Comment:	Store Lyophilized at room temperature up to 1 month Reconstituted for up to 2 weeks at 2-8°C. Aliquot and freeze at -20°C for long term storage. Avoid freeze/thaw cycles.

## Images



### Immunohistochemistry

**Image 1.** Anti-CXCL12 antibody IHC staining of human kidney, tubules. Immunohistochemistry of formalin-fixed, paraffin-embedded tissue after heat-induced antigen retrieval. Antibody ABIN1101028 concentration 41396 ug/ml.



### Immunohistochemistry

**Image 2.** Anti-CXCL12 antibody IHC of human kidney, tubules. Immunohistochemistry of formalin-fixed, paraffin-embedded tissue after heat-induced antigen retrieval. Antibody concentration 2.5 ug/ml.