

Datasheet for ABIN110106

**anti-Laminin gamma 1 antibody****2** Images[Go to Product page](#)

## Overview

Quantity:	100 µL
Target:	Laminin gamma 1 (LAMC1)
Reactivity:	Mouse
Host:	Rabbit
Clonality:	Polyclonal
Conjugate:	This Laminin gamma 1 antibody is un-conjugated
Application:	Please inquire

## Product Details

Immunogen:	Mouse Laminin 161543 chain
Specificity:	Mouse Laminin 161543 chain

## Target Details

Target:	Laminin gamma 1 (LAMC1)
Abstract:	<a href="#">LAMC1 Products</a>
Background:	Serum
Gene ID:	18073

## Application Details

Application Notes:	This antibody has not been tested for use in all applications. This does not necessarily exclude
--------------------	--

Application Details

its use for non-tested procedures. The stated dilutions are recommendations only. We suggest that the applicant titrates the antibody in his/her system using appropriate negative/positive controls.

Restrictions: For Research Use only

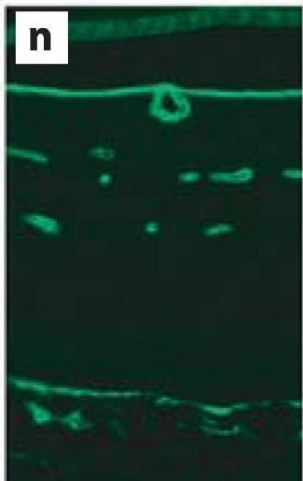
Handling

Format: Lyophilized

Reconstitution: Resuspend in aqua bidest.

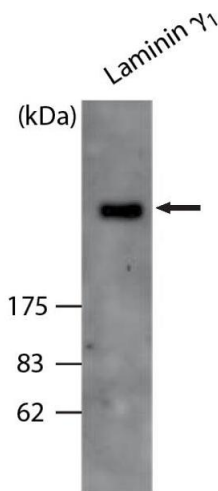
Storage: 4 °C

Images



Immunohistochemistry

**Image 1.** Immunohistochemistry image of Laminin YI staining in paraffin section of a 18 month-old mouse retina. Antigen retrieval was performed in 0.005% trypsin at 37°C for 10 min. The section was incubated With ABIN110106 overnight followed by incubation With Alexa-488 anti- rabbit antibody (1:1000) (Molecular Probes). ABIN110106 stains Bruch's membrane, the capillary basement membranes and the inner limiting membrane. Kunze A et al. (2010) Ophthalmic Res 43:108-112



Western Blotting

**Image 2.** Western Blot analysis of ABIN110106 specificity. Extract of a single retina of a 1 -month-old C57BL/6 wild-type mouse was separated by SDS-PAGE under nonreducing conditions and immunoblotted with ABIN110106 (1 :1000). ABIN110106 specifically binds Laminin YI (arrow). Kunze A et al. (2010) Ophthalmic Res 43:108-112