



[Go to Product page](#)

Datasheet for ABIN1101084
anti-DBH antibody (C-Term)

2 Images

Overview

| | |
|----------------------|--|
| Quantity: | 50 µL |
| Target: | DBH |
| Binding Specificity: | C-Term |
| Reactivity: | Human, Mouse, Primate |
| Host: | Sheep |
| Clonality: | Polyclonal |
| Conjugate: | This DBH antibody is un-conjugated |
| Application: | Western Blotting (WB), Immunohistochemistry (IHC), Immunohistochemistry (Paraffin-embedded Sections) (IHC (p)) |

Product Details

| | |
|---------------|--|
| Brand: | IHC-plus™ |
| Immunogen: | Peptide from the C-terminal region of human dopamine R-hydroxylase (DBH), conjugated to keyhole limpet hemocyanin (KLH). |
| Specificity: | Specific for the ~75k DBH protein in Western blots |
| Purification: | Immunoaffinity purified |

Target Details

| | |
|-------------------|--|
| Target: | DBH |
| Alternative Name: | DBH/Dopamine Beta Hydroxylase (DBH Products) |

Target Details

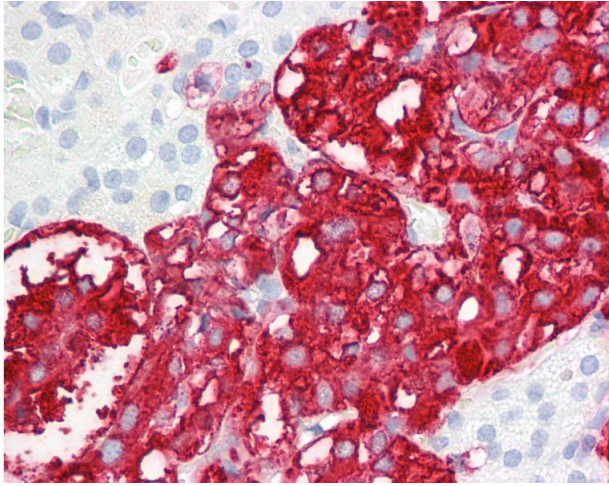
| | |
|-------------|---|
| Background: | Name/Gene ID: DBH Family: Monooxygenase Synonyms: DBH, Dopamine beta-monoxygenase, DBM, Dopamine beta-hydroxylase |
| Gene ID: | 1621 |
| UniProt: | P09172 |
| Pathways: | Carbohydrate Homeostasis |

Application Details

| | |
|--------------------|---|
| Application Notes: | Approved: IHC, IHC-P (1:100), WB (1:1000) |
| Comment: | Target Species of Antibody: Human |
| Restrictions: | For Research Use only |

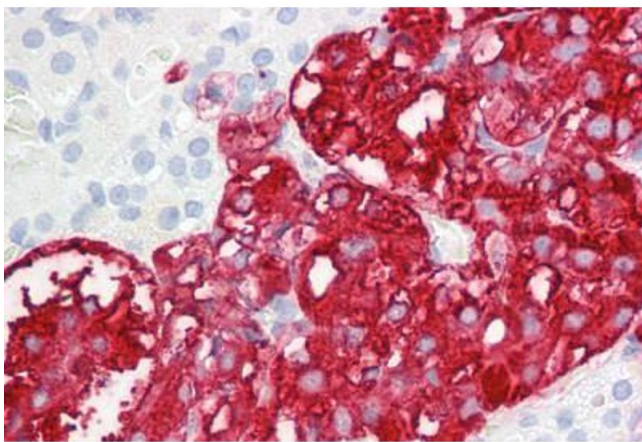
Handling

| | |
|------------------|--|
| Format: | Liquid |
| Concentration: | Lot specific |
| Buffer: | 10 mM HEPES (pH 7.5), 150 mM NaCl, 100 µg per ml BSA and 50 % glycerol. |
| Handling Advice: | Avoid freeze-thaw cycles. |
| Storage: | 4 °C, -20 °C |
| Storage Comment: | Short term: 4°C. Long term: Store at -20°C. Avoid freeze-thaw cycles. |



Immunohistochemistry

Image 1. Anti-DBH antibody IHC of human adrenal. Immunohistochemistry of formalin-fixed, paraffin-embedded tissue after heat-induced antigen retrieval. Antibody dilution 1:100.



Immunohistochemistry

Image 2. Anti-DBH antibody IHC staining of human adrenal. Immunohistochemistry of formalin-fixed, paraffin-embedded tissue after heat-induced antigen retrieval. Antibody ABIN1101084 dilution 1:100.