

## Datasheet for ABIN110112

**anti-NID2 antibody**[Go to Product page](#)

## 1 Image

## Overview

Quantity:	100 µL
Target:	NID2
Reactivity:	Mouse
Host:	Rabbit
Clonality:	Polyclonal
Conjugate:	This NID2 antibody is un-conjugated
Application:	Western Blotting (WB), Immunohistochemistry (IHC), ELISA, Immunohistochemistry (Frozen Sections) (IHC (fro))

## Product Details

Immunogen:	Recombinant mouse Nidogen 2
Specificity:	Mouse Nidogen 2
Purification:	The antibody is affinity-purified from rabbit antiserum by affinity chromatography using an epitope-specific immunogen.

## Target Details

Target:	NID2
Alternative Name:	Nidogen 2 ( <a href="#">NID2 Products</a> )
Background:	Serum
Gene ID:	18074

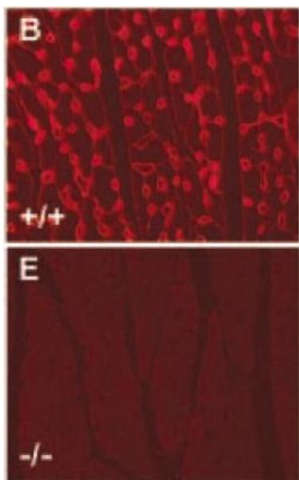
## Application Details

Application Notes:	Western blot (1/400), RIA, Immunohistochemistry (cryo sections) (affinity-purified 4-10 microg/ml) This antibody has not been tested for use in all applications. This does not necessarily exclude its use for non-tested procedures. The stated dilutions are recommendations only. We suggest that the applicant titrates the antibody in his/her system using appropriate negative/positive controls.
Restrictions:	For Research Use only

## Handling

Format:	Lyophilized
Reconstitution:	Resuspend in aqua bidest.
Storage:	4 °C

## Images



### Immunofluorescence

**Image 1.** Immunofluorescence image of Nidogen 2 staining in paraffin sections of cardiac muscle tissue from control (+/+) and Nidogen 2-mutant (-/-) mice. B. In control sections, staining for Nidogen 2 was prominent around capillaries, but not around cardiomyocytes; E. in sections of mutant heart, no specific Nidogen 2-staining was observed. Schymeinsky J et al. (2002) Moll Cell Biol 19:6820-30