

Datasheet for ABIN110118
anti-Laminin 5 antibody



[Go to Product page](#)

1 Image

Overview

Quantity:	100 µg
Target:	Laminin 5 (LN-5)
Reactivity:	Human
Host:	Mouse
Clonality:	Monoclonal
Conjugate:	This Laminin 5 antibody is un-conjugated
Application:	Western Blotting (WB), ELISA

Product Details

Immunogen:	human Laminin 5 beta 3 chain
Clone:	6F12
Isotype:	IgG
Specificity:	Human Laminin 5

Target Details

Target:	Laminin 5 (LN-5)
Alternative Name:	Laminin 5 (LN-5 Products)
Background:	Cell culture supernatant, Protein A purified,PBS pH 7,4

Application Details

Application Notes: Western blot ELISA (coating antibody in sandwich ELISA) This antibody has not been tested for use in all applications. This does not necessarily exclude its use for non-tested procedures. The stated dilutions are recommendations only. We suggest that the applicant titrates the antibody in his/her system using appropriate negative/positive controls.

Restrictions: For Research Use only

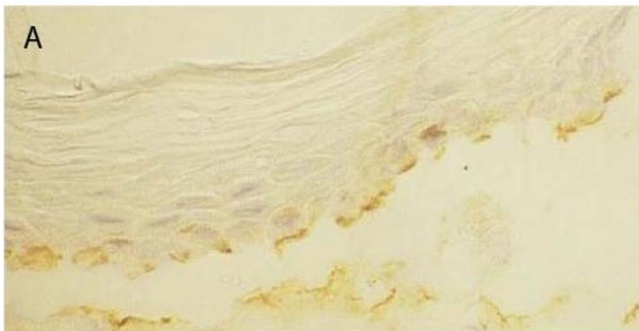
Handling

Format: Lyophilized

Reconstitution: Resuspend in aqua bidest.

Storage: 4 °C

Images



Immunohistochemistry

Image 1. Immunohistochemistry image of Laminin 5 staining in cryosection of bullous pemphigoid Skin. The section was incubated With ABIN110118 and detected using avidin biotin peroxidase complex (ABC) method. A. ABIN110118 stains roof and base of bull- ous pemphigoid blisters. Sasaki T et al. (1998) Arch Dermatol Res 290:283–85