

Datasheet for ABIN1101359
anti-EPM2A antibody (AA 80-130)



[Go to Product page](#)

2 Images

Overview

| | |
|----------------------|--|
| Quantity: | 50 µg |
| Target: | EPM2A |
| Binding Specificity: | AA 80-130 |
| Reactivity: | Human, Cow |
| Host: | Rabbit |
| Clonality: | Polyclonal |
| Conjugate: | This EPM2A antibody is un-conjugated |
| Application: | Western Blotting (WB), Immunohistochemistry (IHC), Immunohistochemistry (Paraffin-embedded Sections) (IHC (p)) |

Product Details

| | |
|---------------|--|
| Brand: | IHC-plus™ |
| Immunogen: | A portion of amino acids 80-130 of human EPM2A. Type of Immunogen: Protein fragment |
| Isotype: | IgG |
| Specificity: | Human EPM2A. |
| Purification: | Immunoaffinity purified |

Target Details

| | |
|---------|-------|
| Target: | EPM2A |
|---------|-------|

Target Details

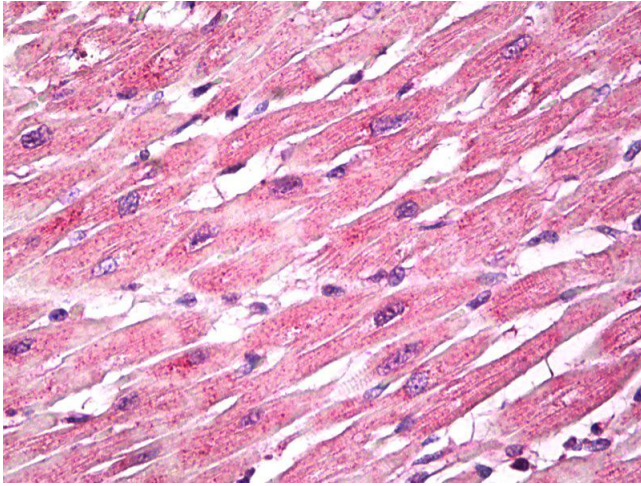
| | |
|-------------------|---|
| Alternative Name: | EPM2A / Laforin (EPM2A Products) |
| Background: | Name/Gene ID: EPM2A Subfamily: Laforin Family: Protein Phosphatase Synonyms: EPM2A, EPM2, LAFPTPase, LDE, Lafora PTPase, MELF, Laforin, LD |
| Gene ID: | 7957 |
| UniProt: | O95278 |
| Pathways: | Cellular Glucan Metabolic Process |

Application Details

| | |
|--------------------|--|
| Application Notes: | Approved: IHC, IHC-P (10 µg/mL), WB (0.25 - 0.5 µg/mL) |
| Comment: | Target Species of Antibody: Human |
| Restrictions: | For Research Use only |

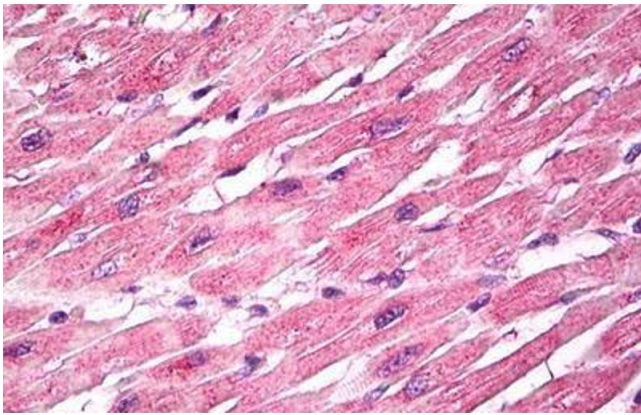
Handling

| | |
|--------------------|--|
| Format: | Liquid |
| Concentration: | Lot specific |
| Buffer: | PBS, 0.05 % BSA, 0.05 % sodium azide |
| Preservative: | Sodium azide |
| Precaution of Use: | This product contains Sodium azide: a POISONOUS AND HAZARDOUS SUBSTANCE which should be handled by trained staff only. |
| Storage: | 4 °C,-20 °C |
| Storage Comment: | Store at 4°C for short term applications. For long term storage, aliquot and store at -20°C. |



Immunohistochemistry

Image 1. Anti-EPM2A / Laforin antibody IHC of human heart. Immunohistochemistry of formalin-fixed, paraffin-embedded tissue after heat-induced antigen retrieval. Antibody dilution 10 ug/ml.



Immunohistochemistry

Image 2. Anti-EPM2A / Laforin antibody IHC staining of human heart. Immunohistochemistry of formalin-fixed, paraffin-embedded tissue after heat-induced antigen retrieval. Antibody ABIN1101359 dilution 10 ug/ml.