



[Go to Product page](#)

Datasheet for ABIN1102209

anti-HSPE1 antibody

2 Images

Overview

Quantity:	50 µg
Target:	HSPE1
Reactivity:	Human, Mouse, Rat, Cow, Sheep, Dog, Pig, Rabbit, Guinea Pig, Xenopus laevis
Host:	Rabbit
Clonality:	Polyclonal
Conjugate:	This HSPE1 antibody is un-conjugated
Application:	Western Blotting (WB), ELISA, Immunohistochemistry (IHC), Immunoprecipitation (IP), Immunohistochemistry (Paraffin-embedded Sections) (IHC (p))

Product Details

Brand:	IHC-plus™
Immunogen:	Human Cpn10 peptide AA 91-101. Type of Immunogen: Synthetic peptide
Specificity:	Detects ~10 kD protein.
Purification:	Protein A purified

Target Details

Target:	HSPE1
Alternative Name:	HSPE1 / HSP10 / Chaperonin 10 (HSPE1 Products)
Background:	Name/Gene ID: HSPE1

Target Details

Synonyms: HSPE1, 10 kd chaperonin, 10 kDa chaperonin, Chaperonin 10, CPN10, Early-pregnancy factor, EPF, GROES, HSP10

Gene ID: 3336

UniProt: [P61604](#)

Pathways: [Positive Regulation of Endopeptidase Activity](#)

Application Details

Application Notes: Approved: ELISA, IHC, IHC-P (10 µg/mL), IP, WB (1:1000)

Comment: Target Species of Antibody: Human

Restrictions: For Research Use only

Handling

Format: Liquid

Concentration: Lot specific

Buffer: PBS, pH 7.3, 0.02 % sodium azide

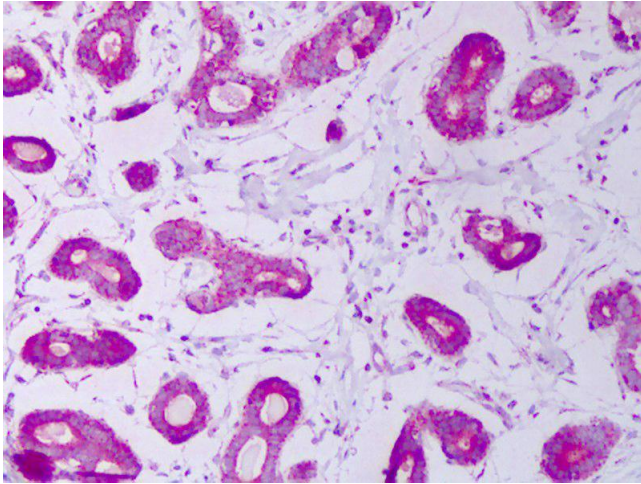
Preservative: Sodium azide

Precaution of Use: This product contains Sodium azide: a POISONOUS AND HAZARDOUS SUBSTANCE which should be handled by trained staff only.

Handling Advice: Avoid freeze-thaw cycles.

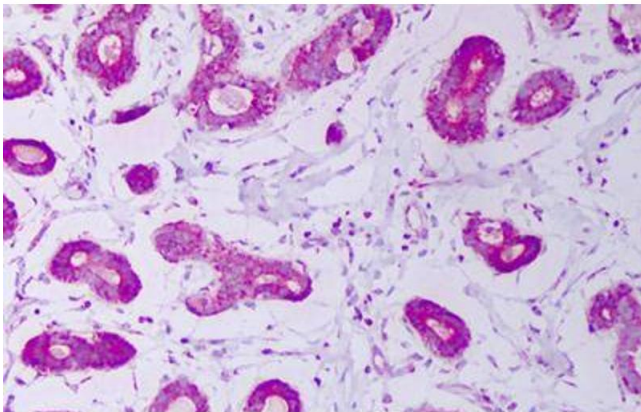
Storage: 4 °C, -20 °C

Storage Comment: Short term: 4°C. Long term: Store at -20°C. Avoid freeze-thaw cycles.



Immunohistochemistry

Image 1. Anti-HSPE1 / CPN10 antibody IHC of human breast. Immunohistochemistry of formalin-fixed, paraffin-embedded tissue after heat-induced antigen retrieval. Antibody concentration 10 ug/ml. This image was taken for the unconjugated form of this product. ...



Immunohistochemistry

Image 2. Anti-HSPE1 / CPN10 antibody IHC staining of human breast. Immunohistochemistry of formalin-fixed, paraffin-embedded tissue after heat-induced antigen retrieval. Antibody ABIN1102209 concentration 10 ug/ml.