

Datasheet for ABIN1102257

anti-IGF2 antibody**2** Images[Go to Product page](#)

Overview

Quantity:	50 µg
Target:	IGF2
Reactivity:	Human
Host:	Rabbit
Clonality:	Polyclonal
Conjugate:	This IGF2 antibody is un-conjugated
Application:	Western Blotting (WB), Immunohistochemistry (IHC), ELISA, Immunohistochemistry (Paraffin-embedded Sections) (IHC (p)), Neutralization (Neut)

Product Details

Brand:	IHC-plus™
Immunogen:	E.coli derived recombinant Human IGF-II. Type of Immunogen: Cell extract
Isotype:	IgG
Specificity:	Human IGF-II
Purification:	Immunoaffinity purified

Target Details

Target:	IGF2
Alternative Name:	IGF2 (IGF2 Products)

Target Details

Background:	Name/Gene ID: IGF2 Family: Hormone Synonyms: IGF2, C11orf43, Insulin-like growth factor II, IGF-II, PP9974, Somatomedin-A
Gene ID:	3481
UniProt:	P01344
Pathways:	Hormone Activity , Regulation of Hormone Metabolic Process , Regulation of Hormone Biosynthetic Process , Regulation of Carbohydrate Metabolic Process , Activated T Cell Proliferation

Application Details

Application Notes:	Approved: ELISA (0.5 - 2 µg/mL), IHC, IHC-P (5 µg/mL), Neut (3 - 5 µg/mL), WB (0.1 - 0.2 µg/mL) Usage: Immunohistochemistry: LS-B7415 in an IHC-plus antibody, validated by our pathologists for use in IHC against formalin-fixed, paraffin-embedded human tissues (IHC validation procedure). A concentration of 5 µg/mL is recommended. Neutralization: To yield one-half maximal inhibition [ND] of the biological activity of hIGF-II (10 ng/mL), a concentration of 3.1-4.6 µg/mL of this antibody is required. ELISA: To detect hIGF-II by sandwich ELISA (using 100 µL/well antibody solution) a concentration of 0.5-2 µg/mL of this antibody is required. This antigen affinity purified antibody, in conjunction with Biotinylated Anti-Human IGF-II (LS-C104384) as a detection antibody, allows the detection of at least 0.2-0.4 ng/well of recombinant hIGF-II. Western Blot: To detect hIGF-II by Western Blot analysis this antibody can be used at a concentration of 0.1-0.2 µg/mL. Used in conjunction with compatible secondary reagents the detection limit for recombinant hIGF-II is 1.5-3 ng/lane, under either reducing or non-reducing conditions.
Comment:	Target Species of Antibody: Human
Restrictions:	For Research Use only

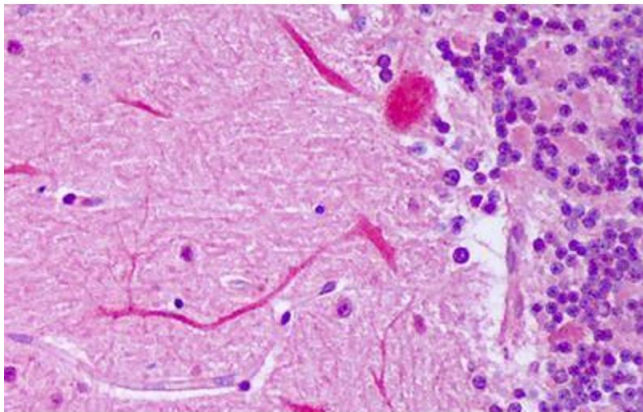
Handling

Format:	Lyophilized
Reconstitution:	Sterile water
Concentration:	Lot specific

Handling

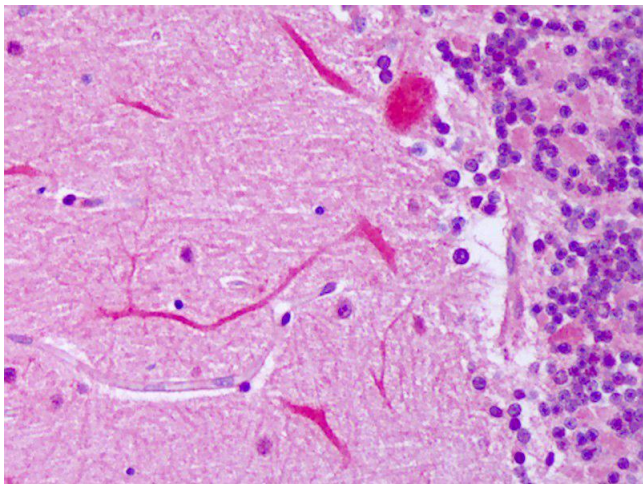
Buffer:	Lyophilized from PBS, pH 7.2
Handling Advice:	Avoid freeze/thaw cycles.
Storage:	4 °C, -20 °C
Storage Comment:	Store Lyophilized at room temperature up to 1 month Reconstituted for up to 2 weeks at 2-8°C. Aliquot and freeze at -20°C for long term storage. Avoid freeze/thaw cycles.

Images



Immunohistochemistry

Image 1. Anti-IGF2 antibody IHC staining of human brain, cerebellum, Purkinje. Immunohistochemistry of formalin-fixed, paraffin-embedded tissue after heat-induced antigen retrieval. Antibody ABIN1102257 concentration 5 ug/ml.



Immunohistochemistry

Image 2. Anti-IGF2 antibody IHC of human brain, cerebellum, Purkinje. Immunohistochemistry of formalin-fixed, paraffin-embedded tissue after heat-induced antigen retrieval. Antibody concentration 5 ug/ml.