



[Go to Product page](#)

Datasheet for ABIN1102796

anti-Laminin gamma 1 antibody (AA 526-1106)

1 Image

Overview

Quantity:	50 µL
Target:	Laminin gamma 1 (LAMC1)
Binding Specificity:	AA 526-1106
Reactivity:	Human
Host:	Mouse
Clonality:	Monoclonal
Conjugate:	This Laminin gamma 1 antibody is un-conjugated
Application:	Western Blotting (WB), ELISA, Immunohistochemistry (IHC), Immunohistochemistry (Paraffin-embedded Sections) (IHC (p))

Product Details

Brand:	IHC-plus™
Immunogen:	Recombinant protein Type of Immunogen: Recombinant protein
Isotype:	IgG1
Specificity:	Anti-Laminin B2 chain recognizes Laminin B2 chain expression in SW480 whole cell lysate.
Purification:	Affinity purified

Target Details

Target:	Laminin gamma 1 (LAMC1)
---------	-------------------------

Target Details

Alternative Name: LAMC1 / Laminin Gamma 1 ([LAMC1 Products](#))

Background: Name/Gene ID: LAMC1

Family: Laminin

Synonyms: LAMC1, Laminin subunit gamma-1, Laminin-7 subunit gamma, Laminin-8 subunit gamma, Laminin-1 subunit gamma, Laminin-4 subunit gamma, Laminin-9 subunit gamma, Laminin B2 chain, Laminin gamma-1 chain, Laminin-3 subunit gamma, Laminin-6 subunit gamma, S-laminin subunit gamma, Laminin Gamma 1, Laminin-10 subunit gamma, Laminin-11 subunit gamma, Laminin-2 subunit gamma, S-LAM gamma

Gene ID: 3915

UniProt: [P11047](#)

Application Details

Application Notes: Approved: ELISA, IHC, IHC-P (10 µg/mL), WB (1:1000)

Comment: Target Species of Antibody: Human

Restrictions: For Research Use only

Handling

Format: Liquid

Concentration: Lot specific

Buffer: Citrate-Tris-HCl buffer, pH 7.0, 0.02 % Proclin 300

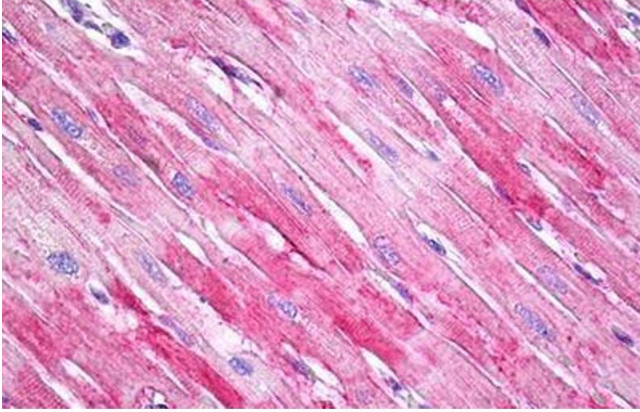
Preservative: ProClin

Precaution of Use: This product contains ProClin: a POISONOUS AND HAZARDOUS SUBSTANCE which should be handled by trained staff only.

Handling Advice: avoid freeze thaw cycles.

Storage: 4 °C, -20 °C

Storage Comment: Short term 4°C, long term aliquot and store at -20°C, avoid freeze-thaw cycles.



Immunohistochemistry

Image 1. Anti-LAMC1 / Laminin Gamma 1 antibody IHC staining of human heart. Immunohistochemistry of formalin-fixed, paraffin-embedded tissue after heat-induced antigen retrieval. Antibody ABIN1102796 concentration 10 ug/ml.