

Datasheet for ABIN1103247
anti-NFE2L3 antibody (AA 351-400)



[Go to Product page](#)

2 Images

Overview

Quantity:	50 µg
Target:	NFE2L3
Binding Specificity:	AA 351-400
Reactivity:	Human, Cow
Host:	Rabbit
Clonality:	Polyclonal
Conjugate:	This NFE2L3 antibody is un-conjugated
Application:	Western Blotting (WB), Immunohistochemistry (IHC), Immunohistochemistry (Paraffin-embedded Sections) (IHC (p))

Product Details

Brand:	IHC-plus™
Immunogen:	Synthetic peptide located between aa351-400 of human NFE2L3 (Q9Y4A8, NP_004280). Percent identity by BLAST analysis: Human, Chimpanzee, Gorilla, Galago (100%), Gibbon, Monkey, Mouse, Dog, Bat, Rabbit (92%), Elephant, Bovine, Guinea pig (85%). Type of Immunogen: Synthetic peptide
Isotype:	IgG
Specificity:	Human NFE2L3
Predicted Reactivity:	Percent identity by BLAST analysis: Human (100%) Mouse, Dog, Rabbit (92%) Bovine (85%).
Purification:	Immunoaffinity purified

Target Details

Target: NFE2L3

Alternative Name: NFE2L3 ([NFE2L3 Products](#))

Background: Name/Gene ID: NFE2L3

Synonyms: NFE2L3, NFE2-related factor 3, NF-E2-related factor 3, NRF3

Gene ID: 9603

NCBI Accession: [NP_004280](#)

UniProt: [Q9Y4A8](#)

Application Details

Application Notes: Approved: IHC, IHC-P (2.5 - 5 µg/mL), WB (0.2 - 1 µg/mL)

Comment: Target Species of Antibody: Human

Restrictions: For Research Use only

Handling

Format: Lyophilized

Reconstitution: Reconstitute with 50 µL sterile ddH₂O.

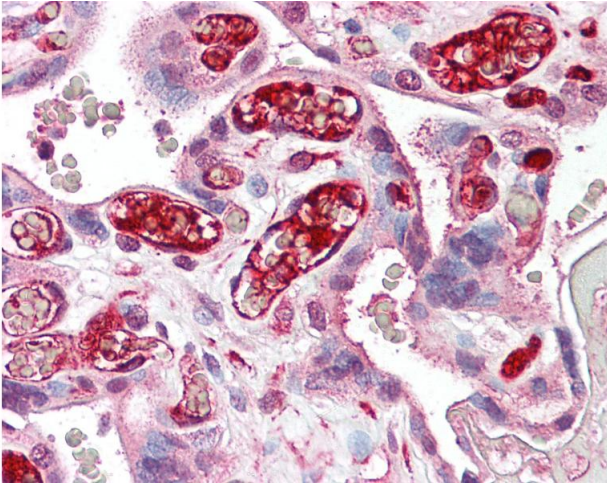
Concentration: Lot specific

Buffer: Lyophilized from PBS with 2 % sucrose

Handling Advice: Avoid repeated freezing and thawing.

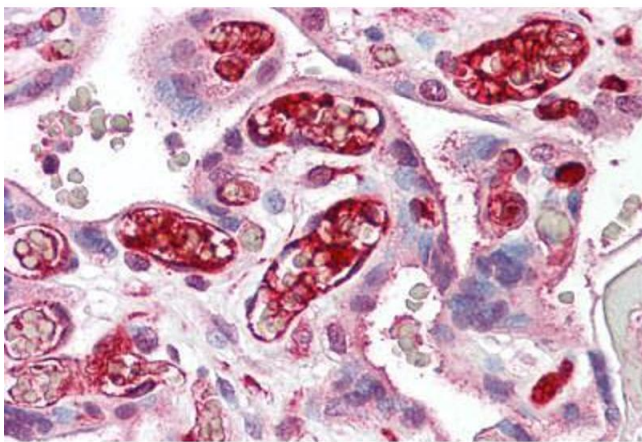
Storage: 4 °C, -20 °C

Storage Comment: Long term: -20°C, the use of 50% glycerol is recommended if storing aliquots in -20°C for long term use (up to 1 year)
Short term (less than 1 week): 4°C. Avoid freeze-thaw cycles.



Immunohistochemistry

Image 1. Anti-NFE2L3 antibody IHC of human placenta. Immunohistochemistry of formalin-fixed, paraffin-embedded tissue after heat-induced antigen retrieval. Antibody dilution 2.5-5 ug/ml. This image was taken for the unconjugated form of this product. Other f ...



Immunohistochemistry

Image 2. Anti-NFE2L3 antibody IHC staining of human placenta. Immunohistochemistry of formalin-fixed, paraffin-embedded tissue after heat-induced antigen retrieval. Antibody ABIN1103247 dilution 38474 ug/ml.