

Datasheet for ABIN1103289

anti-NOD2 antibody[Go to Product page](#)**1** Image

Overview

Quantity:	1 each
Target:	NOD2
Reactivity:	Human
Host:	Rabbit
Clonality:	Polyclonal
Conjugate:	This NOD2 antibody is un-conjugated
Application:	Western Blotting (WB), Immunoprecipitation (IP)

Product Details

Immunogen:	human recombinant Nod2 residues 28-301
Isotype:	IgG
Specificity:	Cross-reacts with NOD2 transfected 293T cell lysate, does not cross-react with SHAM transfected 293T cell lysate. Nod2 is expressed at low levels in monocytes, and may not be detected using this antibody.

Target Details

Target:	NOD2
Alternative Name:	NOD2 / CARD15 (NOD2 Products)
Background:	Name/Gene ID: NOD2
Synonyms: NOD2, BLAU, CARD15, ACUG, NOD-like receptor C2, NOD2B, NLRC2, IBD1, CLR16.3,	

Target Details

	PSORAS1
Gene ID:	64127
Pathways:	Activation of Innate immune Response , Cellular Response to Molecule of Bacterial Origin , Regulation of Leukocyte Mediated Immunity , Positive Regulation of Immune Effector Process , Production of Molecular Mediator of Immune Response , Toll-Like Receptors Cascades , Inflammasome

Application Details

Application Notes:	Approved: IP, WB (1:500 - 1:1000)
Comment:	Target Species of Antibody: Human
Restrictions:	For Research Use only

Handling

Concentration:	Lot specific
Storage:	-20 °C
Storage Comment:	Store at -20°C for up to 2 years.
Expiry Date:	24 months

Images

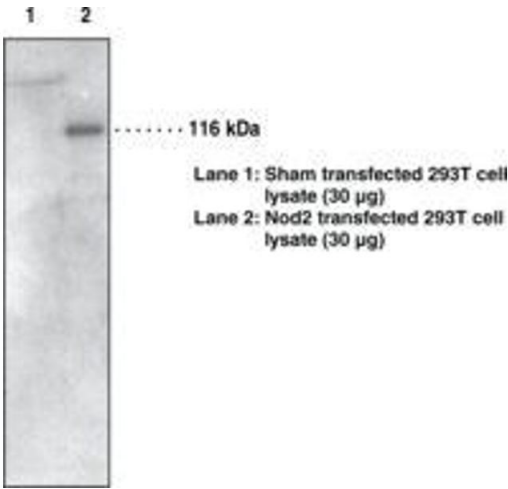


Image 1.