



[Go to Product page](#)

Datasheet for ABIN1103661

## anti-Phospholipase C gamma 1 antibody

### 2 Images

#### Overview

Quantity:	50 µL
Target:	Phospholipase C gamma 1 (PLCG1)
Reactivity:	Human, Mouse, Rat
Host:	Mouse
Clonality:	Monoclonal
Conjugate:	This Phospholipase C gamma 1 antibody is un-conjugated
Application:	Western Blotting (WB), Immunohistochemistry (IHC), Immunohistochemistry (Paraffin-embedded Sections) (IHC (p)), Immunoprecipitation (IP)

#### Product Details

Brand:	IHC-plus™
Immunogen:	Recombinant human PLCG1 purified from E. coli. Type of Immunogen: Recombinant protein
Clone:	2B1
Isotype:	IgG2a kappa
Purification:	Ammonium sulfate precipitation

#### Target Details

Target:	Phospholipase C gamma 1 (PLCG1)
Alternative Name:	PLCG1 ( <a href="#">PLCG1 Products</a> )

## Target Details

---

Background:	Name/Gene ID: PLCG1 Family: Phospholipase  Synonyms: PLCG1, Phospholipase C, gamma 1, Phospholipase C-148, Phosphoinositidase C, Phospholipase C-II, Inositoltrisphosphohydrolase, PLC-gamma-1, PLC1, PLC-148, PLC-II, PLC148, NCKAP3, Phospholipase C-gamma-1, PLCgamma1
Gene ID:	5335
UniProt:	<a href="#">P19174</a>
Pathways:	<a href="#">RTK Signaling</a> , <a href="#">WNT Signaling</a> , <a href="#">TCR Signaling</a> , <a href="#">Fc-epsilon Receptor Signaling Pathway</a> , <a href="#">EGFR Signaling Pathway</a> , <a href="#">Neurotrophin Signaling Pathway</a> , <a href="#">Thyroid Hormone Synthesis</a> , <a href="#">Inositol Metabolic Process</a> , <a href="#">Myometrial Relaxation and Contraction</a> , <a href="#">Regulation of Muscle Cell Differentiation</a> , <a href="#">Regulation of G-Protein Coupled Receptor Protein Signaling</a> , <a href="#">Skeletal Muscle Fiber Development</a> , <a href="#">G-protein mediated Events</a> , <a href="#">Signaling Events mediated by VEGFR1 and VEGFR2</a> , <a href="#">Interaction of EGFR with phospholipase C-gamma</a> , <a href="#">VEGFR1 Specific Signals</a> , <a href="#">VEGF Signaling</a>

## Application Details

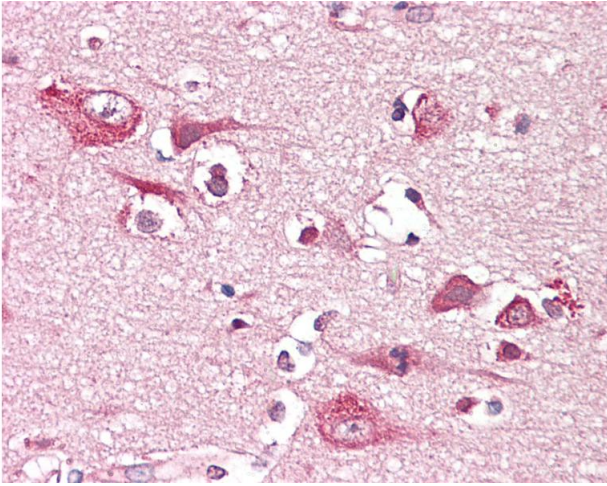
---

Application Notes:	Approved: IHC, IHC-P (1:200), IP, WB (1:2000)
Comment:	Target Species of Antibody: Human
Restrictions:	For Research Use only

## Handling

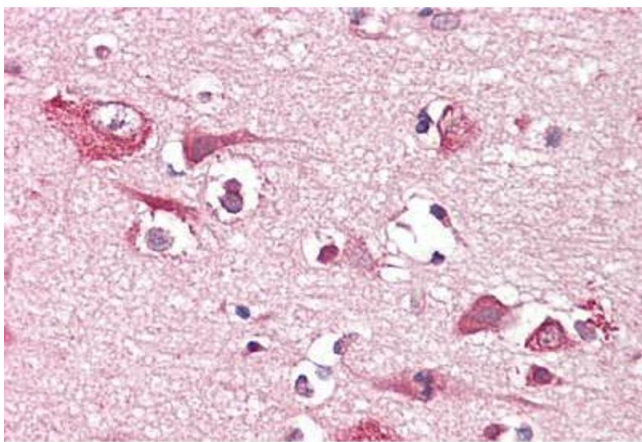
---

Format:	Liquid
Concentration:	Lot specific
Buffer:	HEPES with 0.15M NaCl, 0.01 % BSA, 0.03 % sodium azide, and 50 % glycerol
Preservative:	Sodium azide
Precaution of Use:	This product contains Sodium azide: a POISONOUS AND HAZARDOUS SUBSTANCE which should be handled by trained staff only.
Storage:	-20 °C
Storage Comment:	Short term: -20°C Long term: -20°C.



#### Immunohistochemistry

**Image 1.** Anti-PLCG1 antibody IHC of human brain, cortex. Immunohistochemistry of formalin-fixed, paraffin-embedded tissue after heat-induced antigen retrieval. Antibody dilution 1:200.



#### Immunohistochemistry

**Image 2.** Anti-PLCG1 antibody IHC staining of human brain, cortex. Immunohistochemistry of formalin-fixed, paraffin-embedded tissue after heat-induced antigen retrieval. Antibody ABIN1103661 dilution 1:200.