

Datasheet for ABIN1103681
anti-PLP1 antibody (C-Term)

2 Images

[Go to Product page](#)

Overview

Quantity:	50 µg
Target:	PLP1
Binding Specificity:	C-Term
Reactivity:	Human, Mammalian
Host:	Mouse
Clonality:	Monoclonal
Conjugate:	This PLP1 antibody is un-conjugated
Application:	Western Blotting (WB), Immunohistochemistry (IHC), Immunohistochemistry (Paraffin-embedded Sections) (IHC (p)), Immunohistochemistry (Frozen Sections) (IHC (fro)), Immunocytochemistry (ICC)

Product Details

Brand:	IHC-plus™
Immunogen:	Myelin proteolipid protein, synthetic peptide CGRGTKF corresponding to the C-terminal peptide. Type of Immunogen: Synthetic peptide
Isotype:	IgG2a
Specificity:	Reacts with myelin proteolipid protein in many mammalian species. Shows cross-reactivity to DM20.
Purification:	Purified

Target Details

Target:	PLP1
Alternative Name:	PLP1 / Myelin PLP (PLP1 Products)
Background:	Name/Gene ID: PLP1 Synonyms: PLP1, HLD1, PMD, Myelin proteolipid protein, Proteolipid protein 1, SPG2, Lipophilin, MMPL, PLP, PLP/DM20
Gene ID:	5354

Application Details

Application Notes:	Approved: ICC, IHC, IHC-Fr, IHC-P (10 µg/mL), WB Usage: Suitable for use in Western Blot, Immunocytochemistry and Immunohistochemistry. Western Blot: Can aggregate causing HMW bands to sometimes appear in certain preparations. Immunocytochemistry: 4 % PFA fixed cells for 5-10 minutes at RT. Use 0.1 % triton in block only to allow antibody access to C-terminal epitope. Immunohistochemistry (Frozen): Fresh frozen sections or 4 % PFA fixed, frozen tissues. Epitope is internal, use 0.1-0.2 % triton X-100 in the blocking step for permeabilization. Immunohistochemistry (Paraffin): Works best with lightly fixed tissues, or Bouin's fixed material, although there are reports of traditional formalin fixation also working with antigen recovery. Positive control: Brain.
Comment:	Target Species of Antibody: Human
Restrictions:	For Research Use only

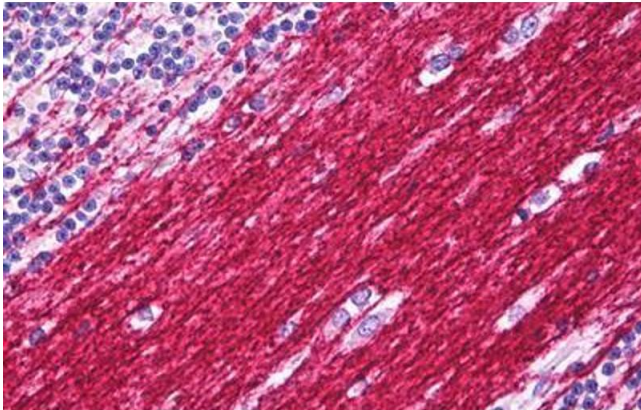
Handling

Format:	Liquid
Concentration:	Lot specific
Buffer:	PBS buffer, pH 7.2, 0.09 % sodium azide
Preservative:	Sodium azide
Precaution of Use:	This product contains Sodium azide: a POISONOUS AND HAZARDOUS SUBSTANCE which should be handled by trained staff only.
Handling Advice:	avoid freeze thaw cycles. Store undiluted.
Storage:	4 °C, -20 °C

Handling

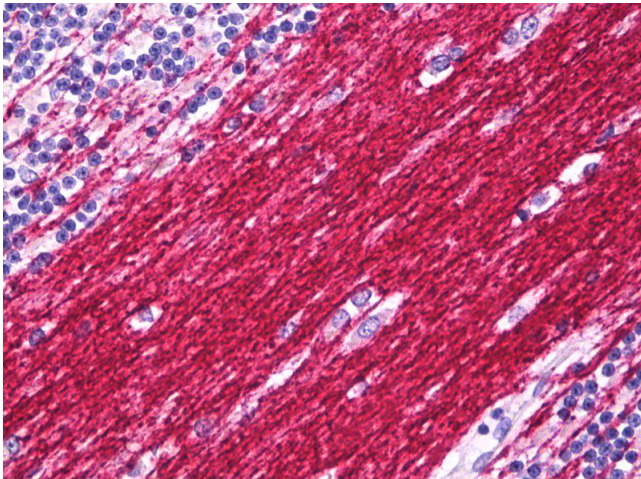
Storage Comment: Short term 4°C, long term aliquot and store at -20°C, avoid freeze-thaw cycles. Store undiluted.

Images



Immunohistochemistry

Image 1. Anti-PLP1 antibody IHC staining of human brain cerebellum, neuropil. Immunohistochemistry of formalin-fixed, paraffin-embedded tissue after heat-induced antigen retrieval. Antibody ABIN1103681 dilution 10 ug/ml.



Immunohistochemistry

Image 2. Anti-PLP1 antibody IHC of human brain cerebellum, neuropil. Immunohistochemistry of formalin-fixed, paraffin-embedded tissue after heat-induced antigen retrieval. Antibody dilution 10 ug/ml.