

Datasheet for ABIN1103824
anti-PSMD11 antibody (AA 288-317)[Go to Product page](#)

2 Images

Overview

Quantity:	200 µL
Target:	PSMD11
Binding Specificity:	AA 288-317
Reactivity:	Human, Mouse
Host:	Rabbit
Clonality:	Polyclonal
Conjugate:	This PSMD11 antibody is un-conjugated
Application:	Western Blotting (WB), Immunohistochemistry (IHC), Immunohistochemistry (Paraffin-embedded Sections) (IHC (p))

Product Details

Brand:	IHC-plus™
Specificity:	This PSMD11 antibody is generated from rabbits immunized with a KLH conjugated synthetic peptide between 288-317 amino acids from the C-terminal region of human PSMD11.
Purification:	Ammonium sulfate precipitation

Target Details

Target:	PSMD11
Alternative Name:	PSMD11 (PSMD11 Products)
Background:	Name/Gene ID: PSMD11 Family: Protease Non Catalytic

Target Details

Synonyms: PSMD11, 26s proteasome subunit 9, S9, Rpn6, p44.5

Gene ID: 5717

UniProt: [O00231](#)

Pathways: [Mitotic G1-G1/S Phases](#), [DNA Replication](#), [Synthesis of DNA](#), [Ubiquitin Proteasome Pathway](#)

Application Details

Application Notes: Approved: IHC, IHC-P (10 µg/mL), WB (1:1000)

Comment: Target Species of Antibody: Human

Restrictions: For Research Use only

Handling

Format: Liquid

Concentration: Lot specific

Buffer: PBS, 0.09 % sodium azide

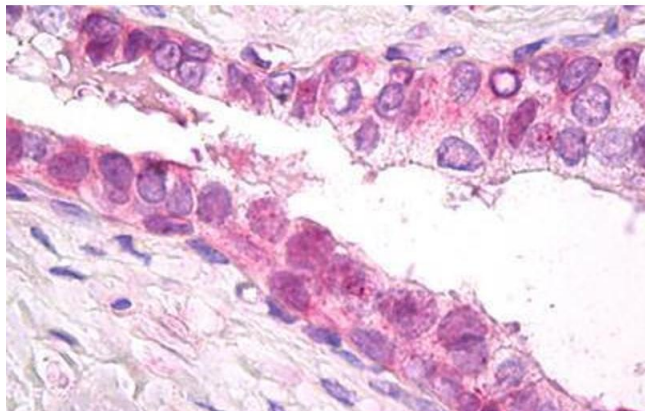
Preservative: Sodium azide

Precaution of Use: This product contains Sodium azide: a POISONOUS AND HAZARDOUS SUBSTANCE which should be handled by trained staff only.

Storage: 4 °C, -20 °C

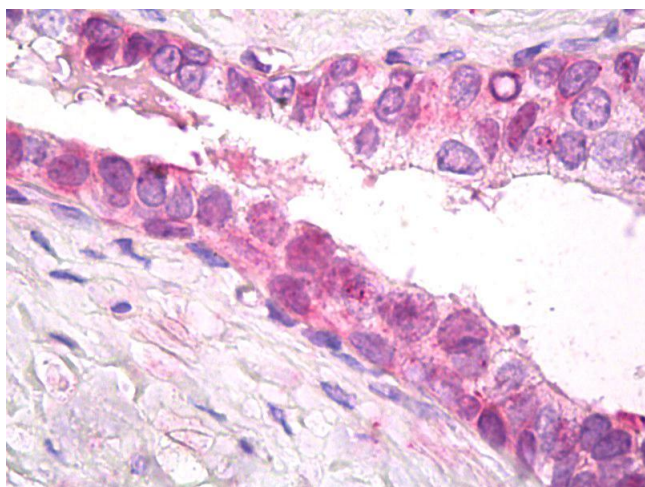
Storage Comment: Maintain refrigerated at 2-8°C for up to 6 months. For long term storage store at -20°C.

Expiry Date: 6 months



Immunohistochemistry

Image 1. Anti-PSMD11 antibody IHC staining of human prostate. Immunohistochemistry of formalin-fixed, paraffin-embedded tissue after heat-induced antigen retrieval. Antibody ABIN1103824 dilution 10 ug/ml.



Immunohistochemistry

Image 2. Anti-PSMD11 antibody IHC of human prostate. Immunohistochemistry of formalin-fixed, paraffin-embedded tissue after heat-induced antigen retrieval. Antibody dilution 10 ug/ml.