

Datasheet for ABIN1104479
anti-Somatostatin antibody



[Go to Product page](#)

2 Images

Overview

Quantity:	0.1 mL
Target:	Somatostatin (SST)
Reactivity:	Human, Mouse, Rat, Pig, Guinea Pig
Host:	Rat
Clonality:	Monoclonal
Conjugate:	This Somatostatin antibody is un-conjugated
Application:	Immunohistochemistry (IHC), Immunohistochemistry (Paraffin-embedded Sections) (IHC (p)), Immunohistochemistry (Frozen Sections) (IHC (fro))

Product Details

Brand:	IHC-plus™
Immunogen:	Somatostatin conjugated to Thyroglobulin.
Clone:	YC7
Isotype:	IgG2b
Specificity:	Somatostatin. A hormone involved in endocrine system regulation through interactions with pituitary growth hormone, thyroid stimulating hormone, and a number of hormones of the gastrointestinal tract. Somatostatin has active 14 amino acid and 28 amino acid forms, produced by alternate cleavage of the gene product. Does not cross react with enkephalins, other endorphins, substance P, or CGRP. It partially cross reacts with somatostatin fragments. The epitope recognized by this lies within the 1-14 amino acid sequence of cyclic somatostatin.

Target Details

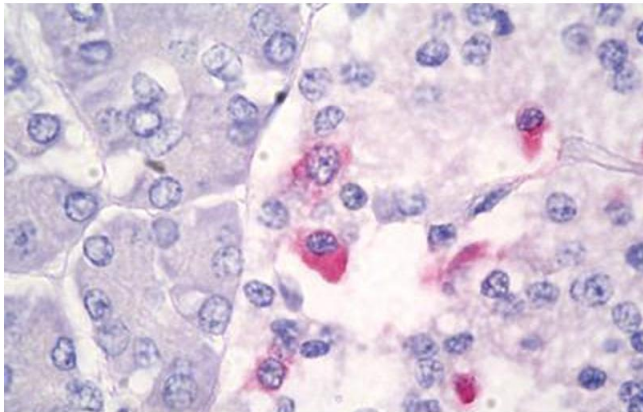
Target:	Somatostatin (SST)
Alternative Name:	SST / Somatostatin (SST Products)
Target Type:	Chemical
Background:	Name/Gene ID: SST
	Family: Hormone
	Synonyms: SST, Somatostatin-28, SMST, Somatostatin-14, Somatostatin
Gene ID:	6750
UniProt:	P61278

Application Details

Application Notes:	Approved: IHC, IHC-Fr, IHC-P (1:20)
Comment:	Target Species of Antibody: Human
Restrictions:	For Research Use only

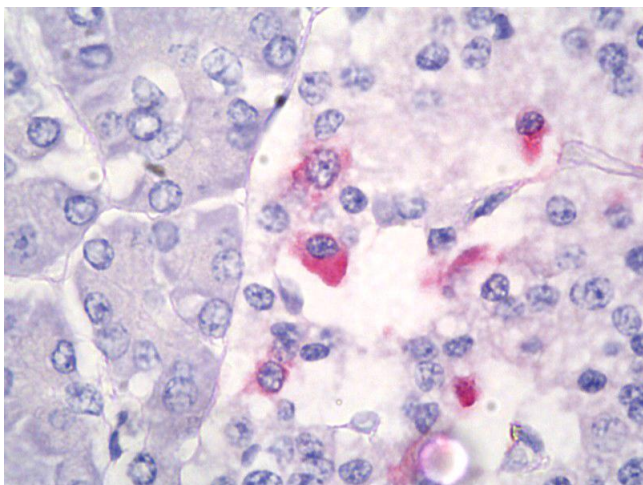
Handling

Format:	Liquid
Concentration:	Lot specific
Buffer:	Tissue Culture Supernatant, 0.05 % Thimerosal.
Preservative:	Thimerosal (Merthiolate)
Precaution of Use:	This product contains Thimerosal (Merthiolate): a POISONOUS AND HAZARDOUS SUBSTANCE which should be handled by trained staff only.
Handling Advice:	Avoid repeated freezing and thawing.
Storage:	4 °C,-20 °C
Storage Comment:	4°C or -20°C, Avoid freeze-thaw cycles.



Immunohistochemistry

Image 1. Anti-Somatostatin antibody IHC staining of human pancreas. Immunohistochemistry of formalin-fixed, paraffin-embedded tissue after heat-induced antigen retrieval. Antibody ABIN1104479 dilution 1:20.



Immunohistochemistry

Image 2. Anti-Somatostatin antibody IHC of human pancreas. Immunohistochemistry of formalin-fixed, paraffin-embedded tissue after heat-induced antigen retrieval. Antibody dilution 1:20.