

Datasheet for ABIN1105293

anti-ALPL antibody

5 Images



[Go to Product page](#)

Overview

Quantity:	0.1 mg
Target:	ALPL
Reactivity:	Human
Host:	Mouse
Clonality:	Monoclonal
Conjugate:	This ALPL antibody is un-conjugated
Application:	Western Blotting (WB), Immunohistochemistry (Paraffin-embedded Sections) (IHC (p)), Flow Cytometry (FACS), Enzyme Immunoassay (EIA)

Product Details

Clone:	2F4
Isotype:	IgG1
Specificity:	Recognizes Human Alkaline phosphatase / ALPL. Other species not tested.
Purification:	Purified

Target Details

Target:	ALPL
Alternative Name:	Alkaline Phosphatase / ALPL (ALPL Products)
Background:	There are at least four distinct but related alkaline phosphatases: intestinal, placental, placental-like, and liver/bone/kidney (tissue non-specific). The first three are located together on chromosome 2, while the tissue non-specific form is located on chromosome 1. The product of

Target Details

this gene is a membrane bound glycosylated enzyme that is not expressed in any particular tissue and is, therefore, referred to as the tissue-nonspecific form of the enzyme. The exact physiological function of the alkaline phosphatases is not known. A proposed function of this form of the enzyme is matrix mineralization, however, mice that lack a functional form of this enzyme show normal skeletal development. This enzyme has been linked directly to hypophosphatasia, a disorder that is characterized by hypercalcemia and includes skeletal defects. The character of this disorder can vary, however, depending on the specific mutation since this determines age of onset and severity of symptoms. Alternatively spliced transcript variants have been described. Synonyms: AP-TNAP, Alkaline phosphatase, Alkaline phosphatase liver/bone/kidney isozyme, TNSALP, tissue-nonspecific isozyme

Molecular Weight:	57.3 kDa
-------------------	----------

Gene ID:	249
----------	-----

Application Details

Application Notes:	Optimal working dilution should be determined by the investigator.
--------------------	--

Restrictions:	For Research Use only
---------------	-----------------------

Handling

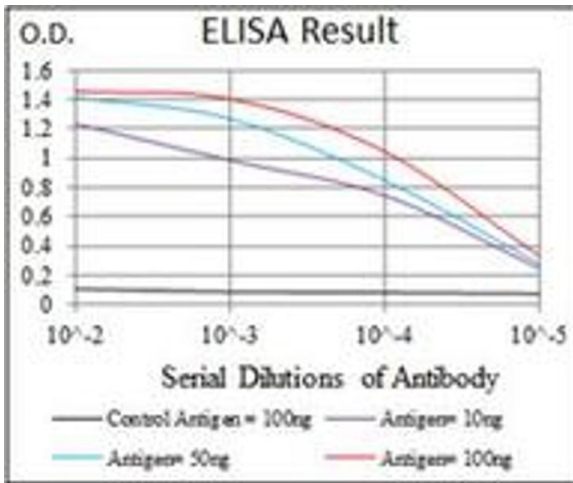
Format:	Liquid
---------	--------

Concentration:	1.0 mg/mL
----------------	-----------

Buffer:	PBS, 0.05 % Sodium Azide, 0.5 % protein stabilizer
---------	--

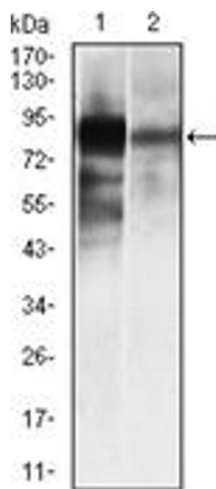
Preservative:	Sodium azide
---------------	--------------

Precaution of Use:	This product contains sodium azide: a POISONOUS AND HAZARDOUS SUBSTANCE which should be handled by trained staff only.
--------------------	--



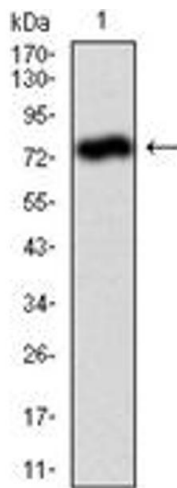
ELISA

Image 1.



Western Blotting

Image 2.



Western Blotting

Image 3.

Please check the [product details page](#) for more images. Overall 5 images are available for ABIN1105293.