

Datasheet for ABIN110541
anti-SDF1 beta antibody[Go to Product page](#)

1 Image

Overview

Quantity:	0.2 mg
Target:	SDF1 beta (SDF1b)
Reactivity:	Rat
Host:	Rabbit
Clonality:	Polyclonal
Conjugate:	This SDF1 beta antibody is un-conjugated
Application:	Western Blotting (WB), Immunoprecipitation (IP), Immunohistochemistry (IHC)

Product Details

Immunogen:	This polyclonal antibody, which reacts with both mouse and rat SDF-1b, was generated using E. coli-expressed mouse SDF-1b as an immunogen.
Isotype:	IgG
Specificity:	Cross-reactivity to SDF-1b of other species has not been determined

Target Details

Target:	SDF1 beta (SDF1b)
Alternative Name:	SDF-1 beta (Stromal Cell-Derived Factor, PBSF) (SDF1b Products)
Background:	SDF-1 β (stromal cell-derived factor- β)1, also known as pre-B-cell growth-stimulating factor (PBSF)2, is a 74-amino acid CXC chemokine originally cloned from a bone marrow stromal cell line1. Targeted deletion of SDF-1 gene resulted in defects of B-cell lymphopoiesis and bone marrow myelopoiesis in mice3. SDF-1 has been shown to be chemotactic for lymphocytes4. In

Target Details

addition, SDF-1 was recently reported to be a ligand for CXCR4 (LESTR/fusin), a co-receptor for HIV-1 entry into T cells^{5,6}, SDF-1 binding to CXCR4 inhibits HIV-1 entry^{5,6}.

UniProt: [P48061](#)

Application Details

Application Notes: The tested titer for Western blot is 1:1,000, immunoprecipitation, 1:300-500; and immunohistochemistry, 1:100-500.

Restrictions: For Research Use only

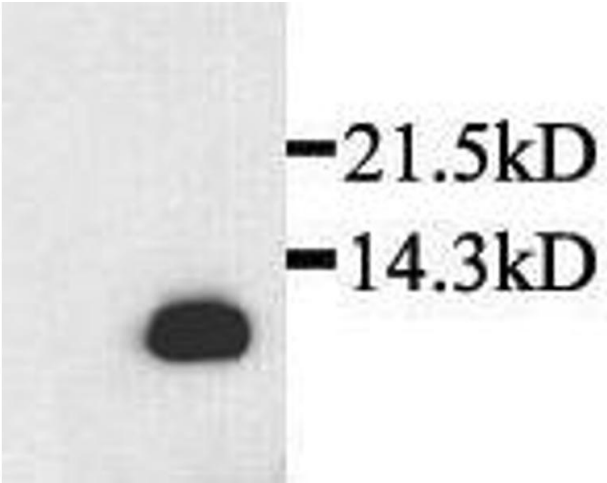
Handling

Format: Lyophilized

Concentration: 1mg/ml

Storage: 4 °C

Images



Western Blotting

Image 1. Detection of rat recombinant SDF-1beta in transfected cells by Western Blot