

Datasheet for ABIN1105450

anti-Asialoglycoprotein Receptor 2 antibody (N-Term)**3** Images[Go to Product page](#)

Overview

Quantity:	100 µL
Target:	Asialoglycoprotein Receptor 2 (ASGR2)
Binding Specificity:	N-Term
Reactivity:	Human, Drosophila melanogaster
Host:	Rabbit
Clonality:	Polyclonal
Conjugate:	This Asialoglycoprotein Receptor 2 antibody is un-conjugated
Application:	Western Blotting (WB), Immunohistochemistry (Paraffin-embedded Sections) (IHC (p))

Product Details

Immunogen:	The immunogen for anti-ASGR2 antibody: synthetic peptide directed towards the N terminal of human ASGR2
Sequence:	LVVICVTGSQ SEGHRGAQLQ AELRSLKEAF SNFSSSTLTE VQAISTHGGS
Cross-Reactivity (Details):	Species reactivity (expected):DrosophilaSpecies reactivity (tested):Human
Purification:	Purified using peptide immunoaffinity column

Target Details

Target:	Asialoglycoprotein Receptor 2 (ASGR2)
Alternative Name:	ASGR2 (ASGR2 Products)
Background:	ASGR2 is a cell surface receptor that binds to galactose-terminated glycoproteins. It transports

Target Details

these glycoproteins via a series of membrane vesicles and tubules to an acidic-sorting organelle where the receptor and ligand dissociates. Then the receptor is recycled back to the cell surface. There are four alternatively spliced transcript variants of this gene. This gene has multiple polyadenylation sites. Synonyms: ASGP-R 2, ASGPR 2, Asialoglycoprotein receptor 2, Hepatic lectin H2

Gene ID: 433

NCBI Accession: [NP_001172](#)

Pathways: [Thyroid Hormone Synthesis](#)

Application Details

Application Notes: Optimal working dilution should be determined by the investigator.

Restrictions: For Research Use only

Handling

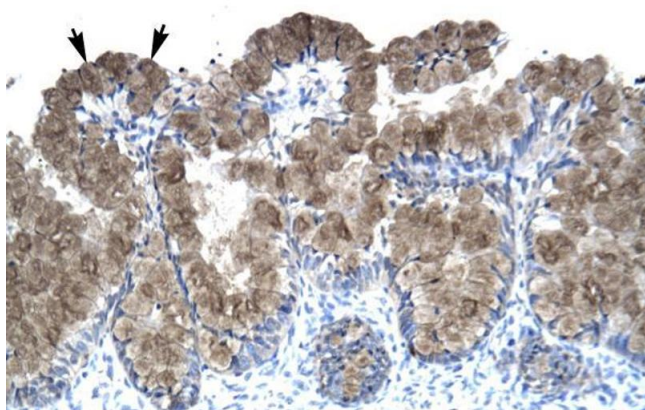
Reconstitution: Add 50 µL of distilled water to a final concentration of 1 mg/mL.

Handling Advice: Avoid repeated freezing and thawing.

Storage: 4 °C/-20 °C

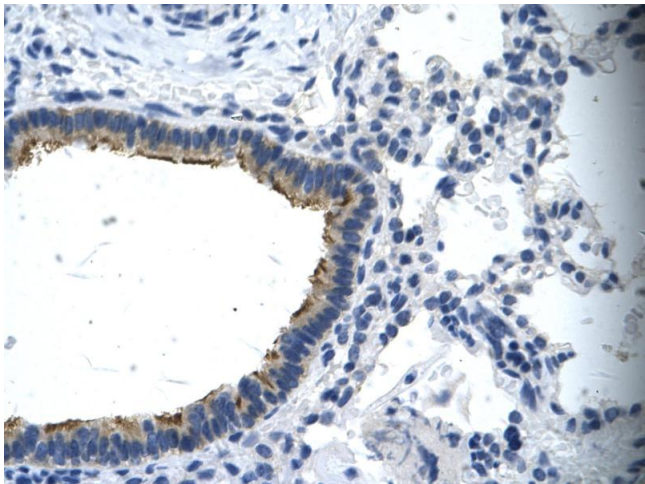
Storage Comment: Store lyophilized at 2-8 °C or at -28 °C long term. After reconstitution store the antibody undiluted at 2-8 °C for up to one month or in aliquots at -28 °C long term.

Images



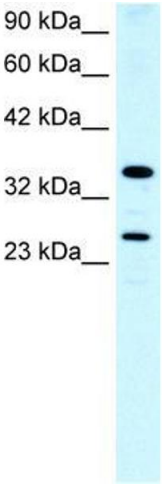
Immunohistochemistry

Image 1. Human Intestine; ASGR2 antibody - N-terminal region in Human Intestine cells using Immunohistochemistry



Immunohistochemistry

Image 2. Human Lung; . Rabbit Anti-ANKRD12 Antibody. . ARP33820 . Paraffin Embedded Tissue: Human cilia . Cellular Data: Epithelial cells of renal tubule. Antibody Concentration: 4.0-8.0 ug/ml. Magnification: 400X



Western Blotting

Image 3. Human Lung; WB Suggested Anti-ASGR2 Antibody Titration: 0.2-1 ug/ml. Positive Control: Human Lung; ASGR2 antibody - N-terminal region in Human Lung cells using Western Blot