

Datasheet for ABIN1105521

anti-Hexosaminidase A antibody

4 Images

[Go to Product page](#)

Overview

Quantity:	0.1 mg
Target:	Hexosaminidase A (HEXA)
Reactivity:	Human
Host:	Mouse
Clonality:	Monoclonal
Conjugate:	This Hexosaminidase A antibody is un-conjugated
Application:	Western Blotting (WB), Flow Cytometry (FACS), Enzyme Immunoassay (EIA)

Product Details

Clone:	3F10
Isotype:	IgG2b
Specificity:	Recognizes Beta-hexosaminidase alpha / HEXA
Cross-Reactivity (Details):	Species reactivity (tested):Human.
Purification:	Purified

Target Details

Target:	Hexosaminidase A (HEXA)
Alternative Name:	beta-Hexosaminidase alpha / HEXA (HEXA Products)
Background:	This gene encodes the alpha subunit of the lysosomal enzyme beta-hexosaminidase that, together with the cofactor GM2 activator protein, catalyzes the degradation of the ganglioside

Target Details

GM2, and other molecules containing terminal N-acetyl hexosamines. Beta-hexosaminidase is composed of two subunits, alpha and beta, which are encoded by separate genes. Both beta-hexosaminidase alpha and beta subunits are members of family 20 of glycosyl hydrolases. Mutations in the alpha or beta subunit genes lead to an accumulation of GM2 ganglioside in neurons and neurodegenerative disorders termed the GM2 gangliosidoses. Alpha subunit gene mutations lead to Tay-Sachs disease (GM2-gangliosidosis type I). Synonyms: Beta-N-acetylhexosaminidase subunit alpha, N-acetyl-beta-glucosaminidase subunit alpha

Molecular Weight: 60.7 kDa

Gene ID: 3073

Pathways: [Sensory Perception of Sound](#), [Glycosaminoglycan Metabolic Process](#)

Application Details

Application Notes: Optimal working dilution should be determined by the investigator.

Restrictions: For Research Use only

Handling

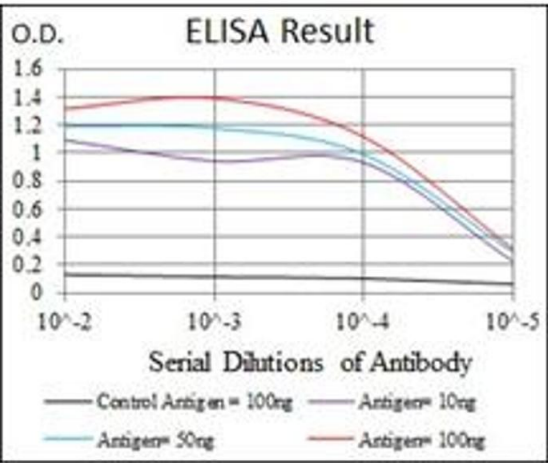
Format: Liquid

Concentration: 1.0 mg/mL

Buffer: PBS, 0.05 % Sodium Azide, 0.5 % protein stabilizer

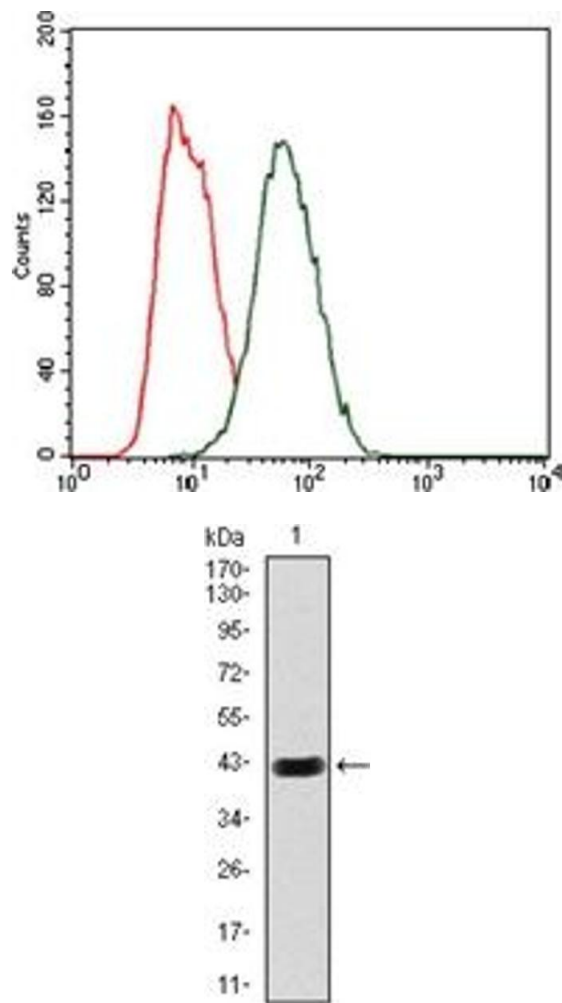
Preservative: Sodium azide

Precaution of Use: This product contains sodium azide: a POISONOUS AND HAZARDOUS SUBSTANCE which should be handled by trained staff only.



ELISA

Image 1.



Flow Cytometry

Image 2.

Western Blotting

Image 3.

Please check the [product details page](#) for more images. Overall 4 images are available for ABIN1105521.