



[Go to Product page](#)

Datasheet for ABIN1105525  
**anti-BHLHE22 antibody (N-Term)**

1 Image

Overview

Quantity:	100 µL
Target:	BHLHE22
Binding Specificity:	N-Term
Reactivity:	Human, Mouse, Rat, Zebrafish (Danio rerio), Cow, Chicken
Host:	Rabbit
Clonality:	Polyclonal
Conjugate:	This BHLHE22 antibody is un-conjugated
Application:	Western Blotting (WB)

Product Details

Immunogen:	The immunogen for anti-BHLHB5 antibody: synthetic peptide directed towards the N terminal of human BHLHB5
Sequence:	LPAGAAALCLK YGESASRGSV AESSGGEQSP DDDSDGRCEL VLRAGVADPR
Cross-Reactivity (Details):	Species reactivity (expected):Mouse, Rat, ZebrafishSpecies reactivity (tested):Human
Purification:	Purified using peptide immunoaffinity column

Target Details

Target:	BHLHE22
Alternative Name:	BHLHB5 / BHLHE22 ( <a href="#">BHLHE22 Products</a> )
Background:	BHLHB5 is a member of family of basic helix-loop-helix (bHLH) transcription factors. Members

## Target Details

of this family have been implicated in many aspects of neural development, including cell growth, differentiation, and cell migration. BHLHB5 inhibits DNA binding of TCF3/E47 homodimers and TCF3 (E47)/NEUROD1 heterodimers and acts as a strong repressor of Neurod1 and Myod-responsive genes, probably by heterodimerization with class a basic helix-loop-helix factors. Despite the presence of an intact basic domain, does not bind to DNA. Synonyms: Class B basic helix-loop-helix protein 5, Class E basic helix-loop-helix protein 22, TNRC20, Trinucleotide repeat-containing gene 20 protein

Gene ID: 27319

NCBI Accession: [NP\\_689627](#)

## Application Details

Application Notes: Optimal working dilution should be determined by the investigator.

Restrictions: For Research Use only

## Handling

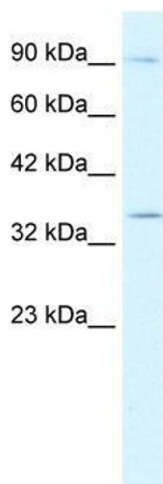
Reconstitution: Add 50  $\mu$ L of distilled water to a final concentration of 1 mg/mL.

Handling Advice: Avoid repeated freezing and thawing.

Storage: 4 °C/-20 °C

Storage Comment: Store lyophilized at 2-8 °C or at -20 °C long term. After reconstitution store the antibody undiluted at 2-8 °C for up to one month or in aliquots at -20 °C long term.

## Images



### Western Blotting

**Image 1.** Human Jurkat; WB Suggested Anti-BHLHB5 Antibody Titration: 0.2-1  $\mu$ g/ml. ELISA Titer: 1:62500. Positive Control: Jurkat cell lysate; BHLHB5 antibody - N-terminal region in Human Jurkat cells using Western Blot