

Datasheet for ABIN1105632
anti-CDH23 antibody (N-Term)

2 Images

[Go to Product page](#)

Overview

Quantity:	50 µg
Target:	CDH23
Binding Specificity:	N-Term
Reactivity:	Human, Mouse, Rat
Host:	Rabbit
Clonality:	Polyclonal
Conjugate:	This CDH23 antibody is un-conjugated
Application:	Immunofluorescence (IF), Immunohistochemistry (Paraffin-embedded Sections) (IHC (p)), Enzyme Immunoassay (EIA)

Product Details

Immunogen:	Synthetic peptide from Human CDH23. Epitope: N-Terminus
Isotype:	IgG
Specificity:	This antibody detects endogenous levels of total CDH23 protein.
Cross-Reactivity (Details):	Species reactivity (expected): Mouse and Rat. Species reactivity (tested): Human.
Purification:	Immunoaffinity Chromatography

Target Details

Target:	CDH23
---------	-------

Target Details

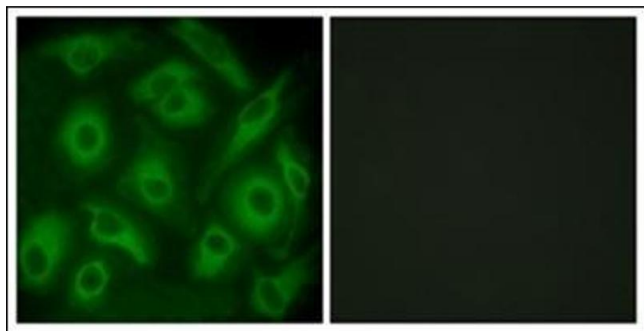
Alternative Name:	Cadherin-23 (CDH23 Products)
Background:	<p>Cadherin like 23 (or Cadherin 23) is, like other members of the cadherin family, a calcium-dependent cell adhesion glycoprotein that preferentially interacts with itself in connecting cells. It is a single pass type I membrane protein that contains 27 cadherin domains. Cadherin like 23 is expressed in the neurosensory epithelium, where it is thought to be involved in stereocilia organisation and hair bundle formation. Defects in the gene encoding Cadherin like 23 are a cause of Usher syndrome, which is characterised by profound congenital sensorineural deafness and eventual blindness. Mutations in this gene are also a cause of non-syndromic sensorineural deafness autosomal recessive type 12 (DFNB12). Cadherin like 23 has also been associated with age-related hearing loss. Synonyms: CDH23, KIAA1774, KIAA1812</p>
Gene ID:	64072
NCBI Accession:	NP_001165401
Pathways:	Sensory Perception of Sound

Application Details

Application Notes:	Optimal working dilution should be determined by the investigator.
Restrictions:	For Research Use only

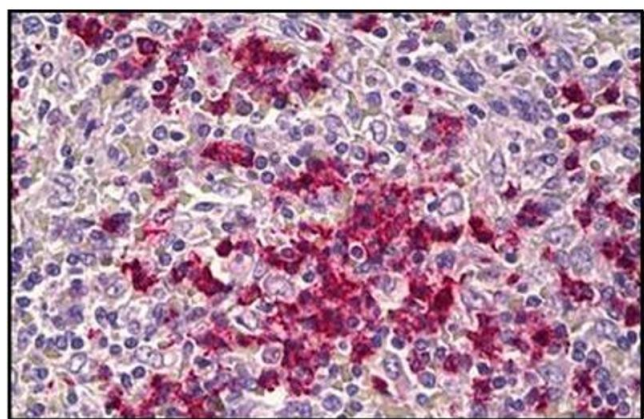
Handling

Concentration:	1.0 mg/mL
Buffer:	PBS (without Mg ²⁺ , Ca ²⁺), pH 7.4, 150 mM Sodium Chloride, 50 % Glycerol, 0.02 % Sodium Azide
Preservative:	Sodium azide
Precaution of Use:	This product contains sodium azide: a POISONOUS AND HAZARDOUS SUBSTANCE which should be handled by trained staff only.
Handling Advice:	Avoid repeated freezing and thawing.
Storage:	4 °C/-20 °C
Storage Comment:	Store the antibody undiluted at 2-8 °C for one month or (in aliquots) at -20 °C for longer.



Immunofluorescence

Image 1. Immunofluorescence analysis of HeLa cells, using CDH23 Antibody. The picture on the right is treated with the synthesized peptide.



Immunohistochemistry (Paraffin-embedded Sections)

Image 2. Human Spleen: Formalin-Fixed, Paraffin-Embedded (FFPE)