

Datasheet for ABIN1105633

anti-CHAF1B antibody**2** Images[Go to Product page](#)

Overview

Quantity:	0.1 mg
Target:	CHAF1B
Reactivity:	Human
Host:	Mouse
Clonality:	Monoclonal
Conjugate:	This CHAF1B antibody is un-conjugated
Application:	Western Blotting (WB), Immunofluorescence (IF), Immunoprecipitation (IP)

Product Details

Clone:	P60-24
Isotype:	IgG1
Specificity:	This antibody reacts with 60 kDa membrane protein CAF-1 on Immunoprecipitation and Immunocytochemistry.
Cross-Reactivity (Details):	Species reactivity (tested):Human.
Purification:	Protein-A Sepharose Chromatography of hybridoma supernatant.

Target Details

Target:	CHAF1B
Alternative Name:	CAF-1 Subunit B (CHAF1B Products)
Background:	Chromatin assembly factor-1 (CAF-1) is a highly conserved member of the histone chaperone

Target Details

family that promotes chromatin assembly during DNA replication in eukaryotes. CAF-1 acts as a specialized assembly factor to target newly synthesized histones to replicating DNA. CAF-1 consists of a complex of three subunits of 150 kDa (p150), 60 kDa (p60), and 48 kDa (p48). The histone chaperone Asf1 (anti-silencing function 1) protein can interact directly with the p60 subunit of CAF-1, possibly linking CAF-1 activity to DNA repair. CAF-1 may also play a regulatory role in DNA damage processing and checkpoint control. Synonyms: CAF1A, CAF1P60, CHAF1B, Chromatin assembly factor 1 subunit B, Chromatin assembly factor I p60 subunit, M-phase phosphoprotein 7, MPHOSPH7, MPP7

Gene ID: 8208

Application Details

Application Notes: Optimal working dilution should be determined by the investigator.

Restrictions: For Research Use only

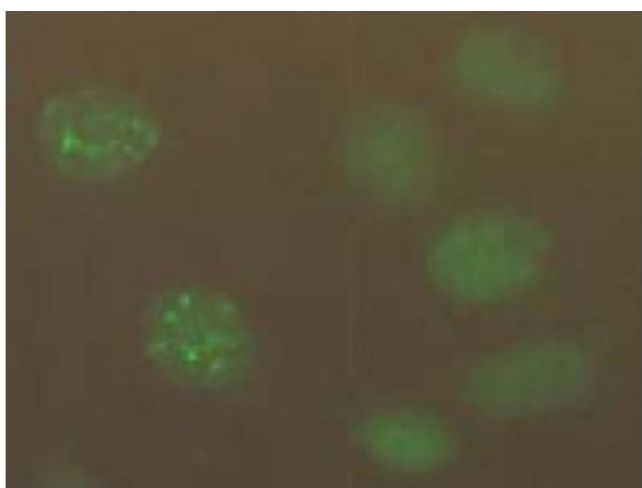
Handling

Concentration: 1.0 mg/mL

Buffer: PBS, pH 7.2 containing 50 % Glycerol without preservatives.

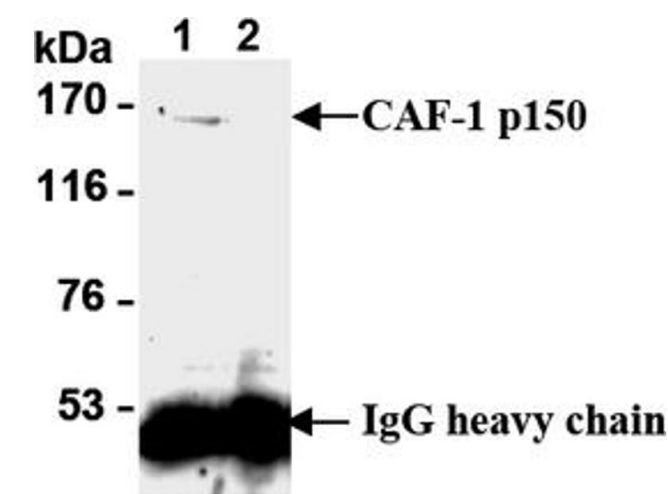
Preservative: Without preservative

Images



Immunofluorescence

Image 1.



Western Blotting

Image 2.