



[Go to Product page](#)

Datasheet for ABIN1105649

anti-CAMKV antibody

3 Images

Overview

Quantity:	50 µg
Target:	CAMKV
Reactivity:	Human, Mouse, Rat
Host:	Rabbit
Clonality:	Polyclonal
Conjugate:	This CAMKV antibody is un-conjugated
Application:	Western Blotting (WB), Immunofluorescence (IF), Immunohistochemistry (Paraffin-embedded Sections) (IHC (p)), Enzyme Immunoassay (EIA)

Product Details

Immunogen:	Synthetic peptide from Human CAMK5. Epitope: Internal
Isotype:	IgG
Specificity:	This antibody detects endogenous levels of total CAMK5 protein.
Cross-Reactivity (Details):	Species reactivity (expected): Mouse and Rat. Species reactivity (tested): Human.
Purification:	Immunoaffinity Chromatography

Target Details

Target:	CAMKV
Alternative Name:	CAMKV (CAMKV Products)

Target Details

Background:	Synonyms: CaM kinase-like vesicle-associated protein, VACAMKL
Gene ID:	79012
NCBI Accession:	NP_076951

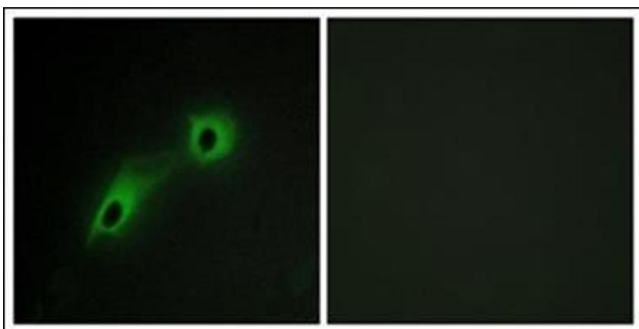
Application Details

Application Notes:	Optimal working dilution should be determined by the investigator.
Restrictions:	For Research Use only

Handling

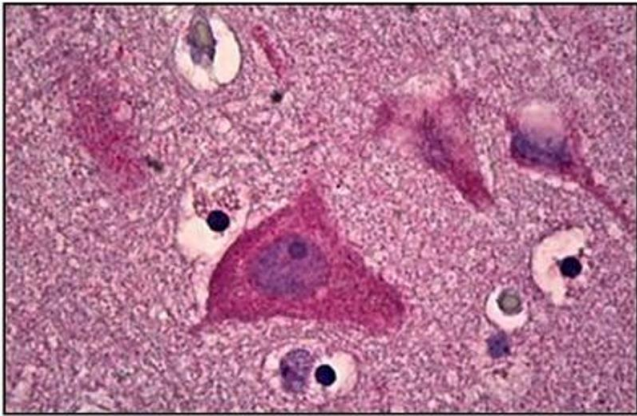
Concentration:	1.0 mg/mL
Buffer:	PBS (without Mg ²⁺ , Ca ²⁺), pH 7.4, 150 mM Sodium Chloride, 50 % Glycerol, 0.02 % Sodium Azide
Preservative:	Sodium azide
Precaution of Use:	This product contains sodium azide: a POISONOUS AND HAZARDOUS SUBSTANCE which should be handled by trained staff only.
Handling Advice:	Avoid repeated freezing and thawing.
Storage:	4 °C/-20 °C
Storage Comment:	Store the antibody undiluted at 2-8 °C for one month or (in aliquots) at -20 °C for longer.

Images



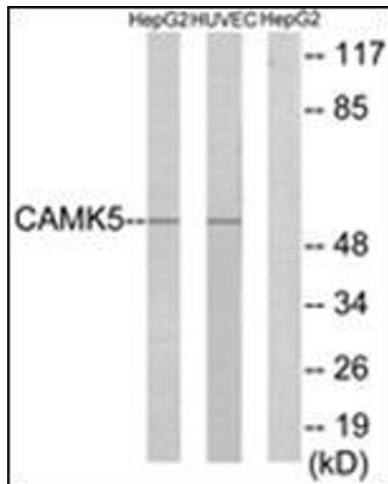
Immunofluorescence

Image 1. Immunofluorescence analysis of HeLa cells, using CAMK5 Antibody. The picture on the right is treated with the synthesized peptide.



Immunohistochemistry (Paraffin-embedded Sections)

Image 2. Human Brain, Cortex: Formalin-Fixed, Paraffin-Embedded (FFPE)



Western Blotting

Image 3. Western blot analysis of extracts from HepG2/HuVc cells, using CAMK5 Antibody. The lane on the right is treated with the synthesized peptide.