

Datasheet for ABIN1105706  
**anti-CBFA2T3 antibody (N-Term)**

## 3 Images

[Go to Product page](#)

## Overview

|                      |  |
|----------------------|--|
| Quantity:            | 100 µL                                 |
| Target:              | CBFA2T3                                |
| Binding Specificity: | N-Term                                 |
| Reactivity:          | Human, Mouse, Rat, Chicken             |
| Host:                | Rabbit                                 |
| Clonality:           | Polyclonal                             |
| Conjugate:           | This CBFA2T3 antibody is un-conjugated |
| Application:         | Western Blotting (WB)                  |

## Product Details

|                             |   |
|-----------------------------|---|
| Immunogen:                  | The immunogen for anti-CBFA2T3 antibody: synthetic peptide directed towards the N terminal of human CBFA2T3 |
| Sequence:                   | QPRSTPPSMP PPPPAASQGA TRPPSFTPHT LMNGSSHSPT AINGAPCTPN  |
| Cross-Reactivity (Details): | Species reactivity (expected):Mouse, Rat, ChickenSpecies reactivity (tested):Human                          |
| Purification:               | Purified using peptide immunoaffinity column  |

## Target Details

|                   |   |
|-------------------|---|
| Target:           | CBFA2T3   |
| Alternative Name: | CBFA2T3 ( <a href="#">CBFA2T3 Products</a> )  |
| Background:       | The t(16,21)(q24,q22) translocation is a rare but recurrent chromosomal abnormality |

## Target Details

associated with therapy-related myeloid malignancies. The translocation produces a chimeric gene made up of the 5'-region of the AML1 gene fused to the 3'-region of CBFA2T3. In addition, CBFA2T3 is a putative breast tumor suppressor. Synonyms: MTG16, MTG8-related protein 2, MTGR2, Myeloid translocation gene on chromosome 16 protein, ZMYND4, Zinc finger MYND domain-containing protein 4

Gene ID: 863

NCBI Accession: [NP\\_787127](#)

## Application Details

Application Notes: Optimal working dilution should be determined by the investigator.

Restrictions: For Research Use only

## Handling

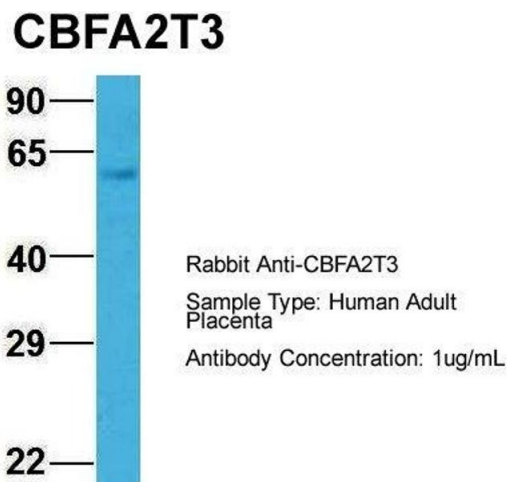
Reconstitution: Add 50 µL of distilled water to a final concentration of 1 mg/mL.

Handling Advice: Avoid repeated freezing and thawing.

Storage: 4 °C/-20 °C

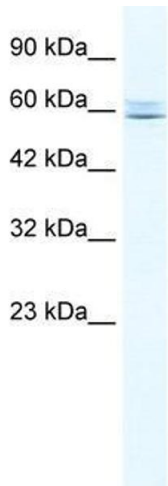
Storage Comment: Store lyophilized at 2-8 °C or at -20 °C long term. After reconstitution store the antibody undiluted at 2-8 °C for up to one month or in aliquots at -20 °C long term.

## Images



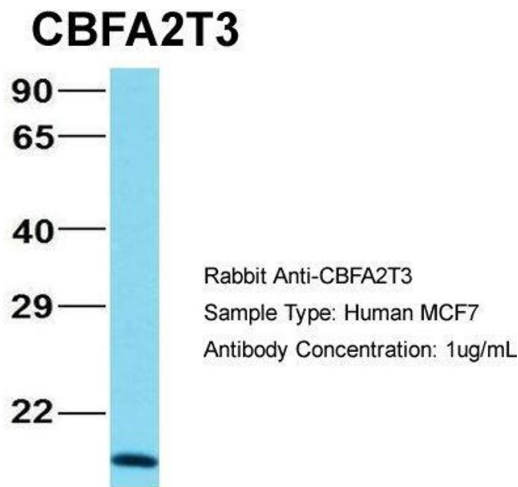
### Western Blotting

**Image 1.** Hum. Adult Placenta; Host: Rabbit. Target Name: CHAD . Sample Tissue: Human Adult Placenta . Antibody Dilution: 1.0µg/mL; CBFA2T3 antibody - N-terminal region in Hum. Adult Placenta cells using Western Blot



#### Western Blotting

**Image 2.** Human Jurkat; WB Suggested Anti-CBFA2T3 Antibody Titration: 0.2-1 ug/ml. Positive Control: Jurkat cell lysate. CBFA2T3 is supported by BioGPS gene expression data to be expressed in Jurkat.; CBFA2T3 antibody - N-terminal region in Human Jurkat cells using Western Blot



#### Western Blotting

**Image 3.** Human MCF7; Host: Rabbit. Target Name: NOP56 . Sample Tissue: MCF7 . Antibody Dilution: 1.0ug/ml. CBFA2T3 is supported by BioGPS gene expression data to be expressed in MCF7.; CBFA2T3 antibody - N-terminal region in Human MCF7 cells using Western Blot