

Datasheet for ABIN1105993
anti-CCR6 antibody (N-Term)



[Go to Product page](#)

2 Images

Overview

Quantity:	0.1 mg
Target:	CCR6
Binding Specificity:	N-Term
Reactivity:	Human, Mouse, Rat
Host:	Rabbit
Clonality:	Polyclonal
Conjugate:	This CCR6 antibody is un-conjugated
Application:	Western Blotting (WB), Immunohistochemistry (Paraffin-embedded Sections) (IHC (p))

Product Details

Immunogen:	A synthetic peptide corresponding to a sequence at the N-terminal of human CCR6 .Remarks: Sequence is identical to the related rat and mouse sequence.
Isotype:	IgG
Specificity:	This antibody detects CD196 / CCR6 at C-term.
Cross-Reactivity (Details):	Species reactivity (tested):Human, mouse, rat
Purification:	Immunogen affinity purified

Target Details

Target:	CCR6
Alternative Name:	CD196 / CCR6 (CCR6 Products)

Target Details

Background: CCR6, also termed CKRL3, encodes a 369-amino acid polypeptide with greatest similarity to the family of alpha-chemokine-binding receptors. Unlike most chemokine receptor genes, it is encoded by more than 1 exon. Weakly expressed as a 4-kb transcript in spleen, lymph nodes, peripheral blood lymphocytes and appendix, CCR6 gene is located at 6q27. As the receptor for MIP-3-alpha, its activation leads to phospholipase C-dependent intracellular Ca(2+) mobilization. Additionally, CCR6 are markedly upregulated in psoriasis. Synonyms: C-C CKR-6, C-C chemokine receptor type 6, CC-CKR-6, CCR-6, CKRL3, CMKBR6, Chemokine receptor-like 3, DRY6, G-protein coupled receptor 29, GPR-CY4, GPR29, LARC receptor, STRL22

Gene ID: 1235

NCBI Accession: [NP_004358](#)

UniProt: [P51684](#)

Pathways: [cAMP Metabolic Process](#)

Application Details

Application Notes: Optimal working dilution should be determined by the investigator.

Restrictions: For Research Use only

Handling

Reconstitution: 0.2 mL of distilled water will yield a concentration of 500 µg/mL.

Buffer: 5 mg BSA, 0.9 mg NaCl, 0.2 mg Na₂HPO₄, 0.05 mg Thimerosal, 0.05 mg NaN₃

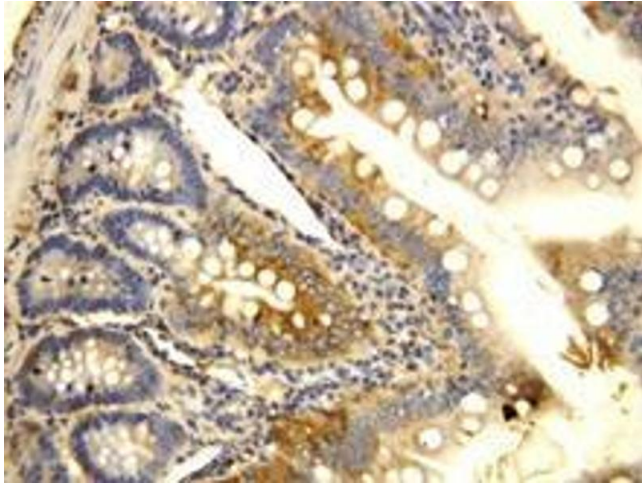
Preservative: Sodium azide, Thimerosal (Merthiolate)

Precaution of Use: This product contains Sodium azide and Thimerosal (Merthiolate): a POISONOUS AND HAZARDOUS SUBSTANCE, which should be handled by trained staff only.

Handling Advice: Avoid repeated freezing and thawing.

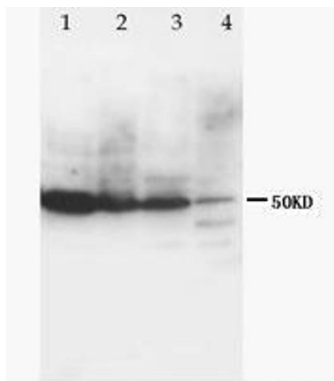
Storage: 4 °C/-20 °C

Storage Comment: Store at 2 - 8 °C for up to one month or (in aliquots) at -20 °C for longer.



Immunohistochemistry (Paraffin-embedded Sections)

Image 1. CCR6 Polyclonal Antibody



Lane 1 : Rat Thymus tissue Lysate
Lane 2: MCF7 Whole Cell Lysate
Lane 3 : HeLa Whole Cell Lysate
Lane 4 : smmc cell lysate

Western Blotting

Image 2. CCR6 Polyclonal Antibody