

Datasheet for ABIN1106645

anti-CDK2 antibody

5 Images

[Go to Product page](#)

Overview

Quantity:	0.1 mg
Target:	CDK2
Reactivity:	Human, Mouse
Host:	Mouse
Clonality:	Monoclonal
Conjugate:	This CDK2 antibody is un-conjugated
Application:	Western Blotting (WB), Flow Cytometry (FACS), Immunofluorescence (IF), Immunohistochemistry (Paraffin-embedded Sections) (IHC (p)), Enzyme Immunoassay (EIA)

Product Details

Clone:	1A6
Isotype:	IgG1
Cross-Reactivity (Details):	Species reactivity (tested): Human, Mouse.
Purification:	Purified

Target Details

Target:	CDK2
Alternative Name:	CDK2 (CDK2 Products)
Background:	Cdk2 is a member of the Ser/Thr protein kinase family. It is highly similar to the gene products of <i>S. cerevisiae</i> cdc28, and <i>S. pombe</i> cdc2. It is a catalytic subunit of the cyclin-dependent protein kinase complex, whose activity is restricted to the G1-S phase, and is essential for cell

Target Details

cycle G1/S phase transition. This protein associates with and is regulated by the regulatory subunits of the complex including cyclin A or E, CDK inhibitor p21Cip1 (CDKN1A) and p27Kip1 (CDKN1B). Its activity is also regulated by protein phosphorylation. Two alternatively spliced variants and multiple transcription initiation sites of this gene have been reported. Synonyms: Cell division protein kinase 2, Cyclin dependent kinase 2, p33 protein kinase

Molecular Weight: 33.9 kDa

Gene ID: 1017

Pathways: [PI3K-Akt Signaling](#), [Cell Division Cycle](#), [Mitotic G1-G1/S Phases](#), [DNA Replication](#), [M Phase](#), [Synthesis of DNA](#)

Application Details

Application Notes: Optimal working dilution should be determined by the investigator.

Restrictions: For Research Use only

Handling

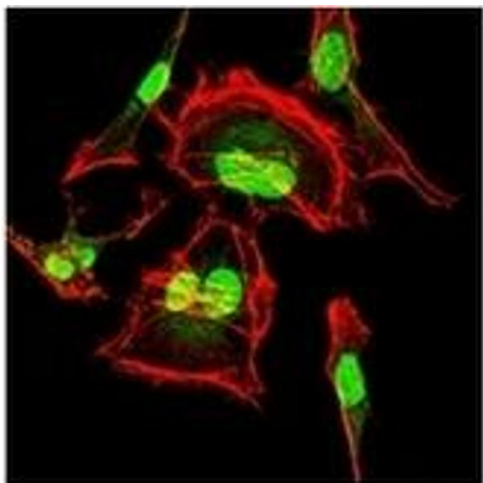
Format: Liquid

Concentration: 1.0 mg/mL

Buffer: PBS, 0.05 % Sodium Azide, 0.5 % protein stabilizer

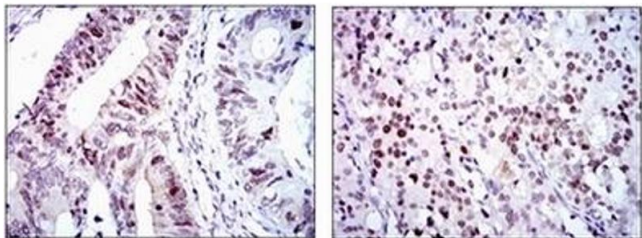
Preservative: Sodium azide

Precaution of Use: This product contains sodium azide: a POISONOUS AND HAZARDOUS SUBSTANCE which should be handled by trained staff only.



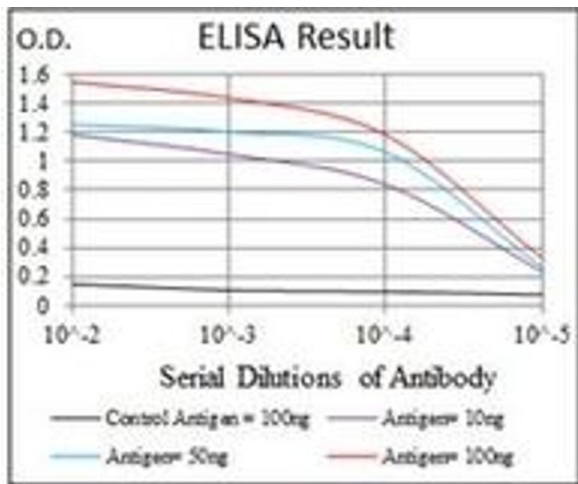
Immunofluorescence

Image 1.



Immunohistochemistry

Image 2.



ELISA

Image 3.

Please check the [product details page](#) for more images. Overall 5 images are available for ABIN1106645.