



Datasheet for ABIN1106731

## anti-COTL1 antibody



[Go to Product page](#)

### 3 Images

#### Overview

Quantity:	0.1 mg
Target:	COTL1
Reactivity:	Human
Host:	Mouse
Clonality:	Monoclonal
Conjugate:	This COTL1 antibody is un-conjugated
Application:	Western Blotting (WB), Immunohistochemistry (Paraffin-embedded Sections) (IHC (p)), Enzyme Immunoassay (EIA)

#### Product Details

Clone:	5C8
Isotype:	IgG1
Specificity:	Recognizes Coactosin-like protein (COLT1).
Cross-Reactivity (Details):	Species reactivity (tested):Human.
Purification:	Purified

#### Target Details

Target:	COTL1
Abstract:	<a href="#">COTL1 Products</a>
Background:	This gene encodes one of the numerous actin-binding proteins which regulate the actin

## Target Details

cytoskeleton. This protein binds F-actin, and also interacts with 5-lipoxygenase, which is the first committed enzyme in leukotriene biosynthesis. Although this gene has been reported to map to chromosome 17 in the Smith-Magenis syndrome region, the best alignments for this gene are to chromosome 16. The Smith-Magenis syndrome region is the site of two related pseudogenes. Synonyms: CLP, COTL1

Molecular Weight: 16 kDa

Gene ID: 23406

## Application Details

Application Notes: Optimal working dilution should be determined by the investigator.

Restrictions: For Research Use only

## Handling

Format: Liquid

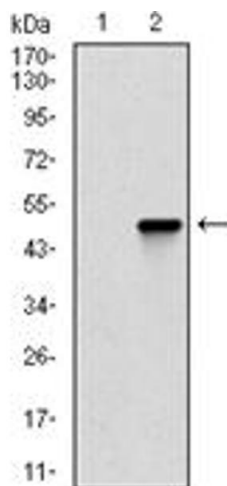
Concentration: 1.0 mg/mL

Buffer: PBS, 0.05 % Sodium Azide, 0.5 % protein stabilizer

Preservative: Sodium azide

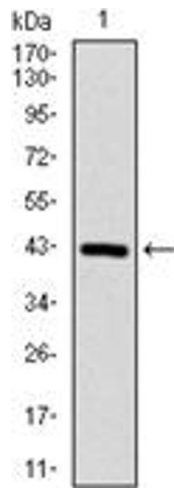
Precaution of Use: This product contains sodium azide: a POISONOUS AND HAZARDOUS SUBSTANCE which should be handled by trained staff only.

## Images



### Western Blotting

Image 1.



### Western Blotting

Image 2.

### Immunohistochemistry

Image 3.

