



[Go to Product page](#)

Datasheet for ABIN1106825
anti-COX7A2 antibody (N-Term)

2 Images

Overview

Quantity:	50 µg
Target:	COX7A2
Binding Specificity:	N-Term
Reactivity:	Human, Mouse, Rat
Host:	Rabbit
Clonality:	Polyclonal
Conjugate:	This COX7A2 antibody is un-conjugated
Application:	Western Blotting (WB), Immunohistochemistry (Paraffin-embedded Sections) (IHC (p)), Enzyme Immunoassay (EIA)

Product Details

Immunogen:	Synthetic peptide from Human COX7S/A2. Epitope: N-Terminus.
Isotype:	IgG
Purification:	Immunoaffinity Chromatography

Target Details

Target:	COX7A2
Alternative Name:	COX7A2 (COX7A2 Products)
Background:	Synonyms: COX7AL, Cytochrome c oxidase subunit 7A2 mitochondrial, Cytochrome c oxidase subunit VIIa-liver/heart, Cytochrome c oxidase subunit VIIaL

Target Details

Gene ID: 1347

NCBI Accession: [NP_001856](#)

Application Details

Application Notes: Optimal working dilution should be determined by the investigator.

Restrictions: For Research Use only

Handling

Concentration: 1.0 mg/mL

Buffer: PBS (without Mg²⁺, Ca²⁺), pH 7.4, 150 mM Sodium Chloride, 50 % Glycerol 0.00 % Sodium Azide

Preservative: Sodium azide

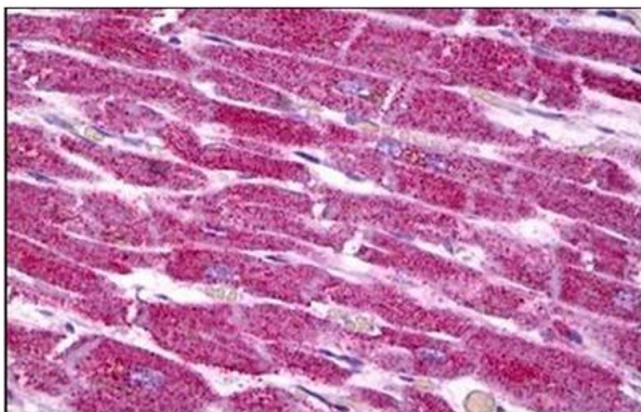
Precaution of Use: This product contains sodium azide: a POISONOUS AND HAZARDOUS SUBSTANCE which should be handled by trained staff only.

Handling Advice: Avoid repeated freezing and thawing.

Storage: 4 °C/-20 °C

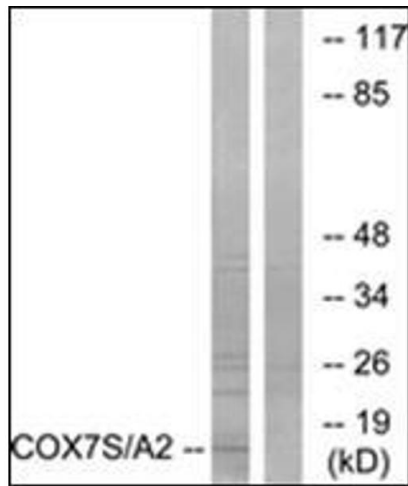
Storage Comment: Store the antibody undiluted at 2-8 °C for one month or (in aliquots) at -20 °C for longer.

Images



Immunohistochemistry (Paraffin-embedded Sections)

Image 1. Human Heart: Formalin-Fixed, Paraffin-Embedded (FFPE)



Western Blotting

Image 2. Western blot analysis of extracts from rat heart cells, using COX7S/A2 Antibody. The lane on the right is treated with the synthesized peptide.